

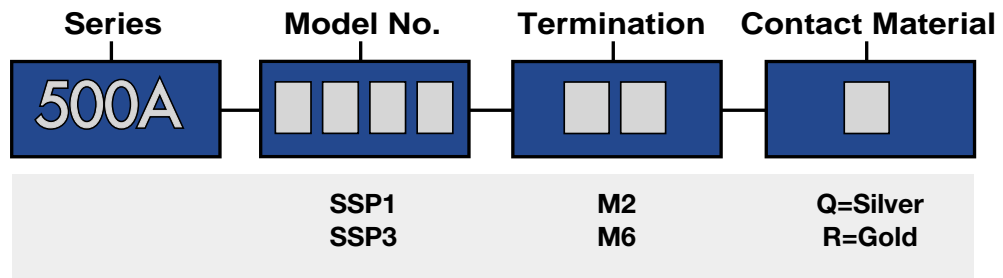
SPECIFICATIONS

Ratings: 3 A @ 120 VAC
 1 A @ 250 VAC
 Electrical Life: 50,000 make-and-break cycles at full load
 Contact Resistance: 10 mΩ max. typical @ 2-4 VDC
 100mA for both silver and gold plated contacts
 Insulation Resistance: 1,000MΩ min.
 Dielectric Strength: 1,000 V rms at sea level
 Operating Temperature: -30°C to 85°C

MATERIALS

Case: Diallyl phthalate (DAP)
 Housing: Stainless steel
 Slide Handle: Nylon
 Contact & Terminals: Gold or Silver plated copper alloy

HOW TO ORDER



EXAMPLE



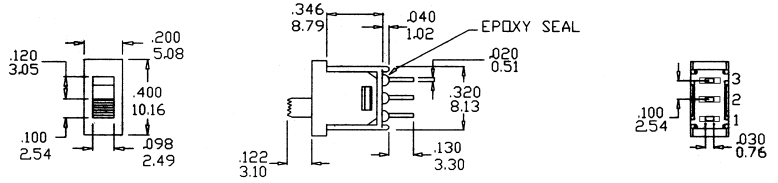
SPECIFICATIONS SUBJECT TO CHANGE WITHOUT NOTICE.

SUB-MINIATURE SLIDE SWITCHES



SPDT

Model No.	Switching Position		
SSP-1	ON	NONE	ON
SSP-3	ON	OFF	ON
Term. Comm.	2-1	OPEN	2-3



Schematic

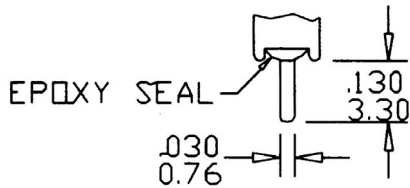
() = Momentary



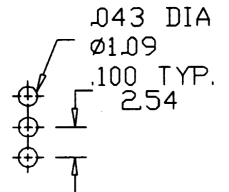
TERMINATION OPTIONS



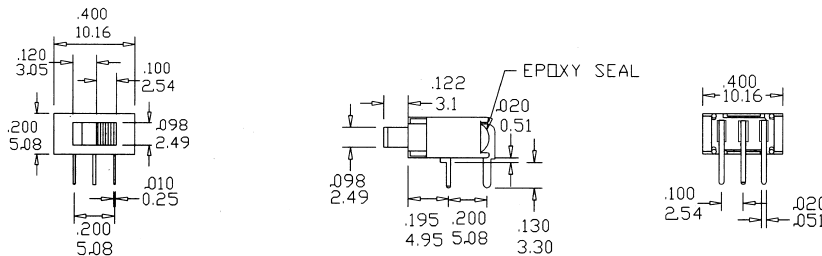
M2
PC PIN



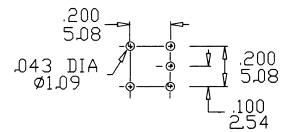
P.C. MOUNTING



M6



P.C. MOUNTING



CONTACT MATERIAL OPTIONS

Q
Fixed Terminal: Silver plated copper alloy
Moving Contact: Silver plated copper alloy
Rating: 3 Amps with resistive load @ 120VAC or 28VDC
 1 Amp with resistive load @ 250VAC

R
Fixed Terminal: Copper alloy with gold plate over nickel plate
Moving Contact: Copper alloy with gold plate over nickel plate
Rating: 0.4 Volt-Amps (VA) max. @ 20V max. (AC or DC)

SPECIFICATIONS SUBJECT TO CHANGE WITHOUT NOTICE.