

RJ-45

Connector Modules  
with Integrated LAN Magnetics

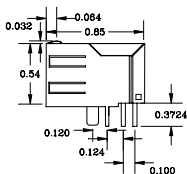
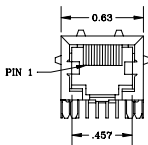
8305-8312



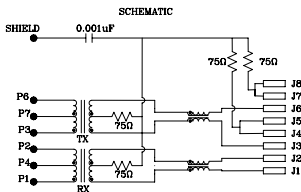
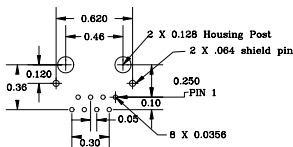
- Unique layout conserves precious circuit board space
- Designed for HUB applications
- IEEE 802.3u
- Compliant with a wide assortment of ICs
- Primary center taps available for additional EMI reduction



MECHANICAL AND SCHEMATIC (All dimensions in inches)



PCB LAYOUT



UNLESS OTHERWISE SPECIFIED, ALL TOLERANCES ARE ±0.010

ELECTRICAL SPECIFICATION @ 25 °C

Part Number	Inductance µH min 8mA DC 0 - 70 °C	Return Loss dB min			CMRR (TX/RX)		Crosstalk dB min		Voltage Isolation 10 mA, 1 min. (Vrms)	Turns Ratio	
		1 - 30 MHz	30 - 60 MHz	60 - 80 MHz	1 - 60 MHz	60 - 100 MHz	1 - 60 MHz	60 - 100 MHz		TX	RX
8305	350	16	16 - 20 log (f/30 MHz)	10	45 / 40	40 / 35	40	38	1500	1CT:1CT	1CT:1CT
8306	350	16	16 - 20 log (f/30 MHz)	10	45 / 40	40 / 35	40	38	1500	1.414CT:1CT	1CT:1CT
8307	350	16	16 - 20 log (f/30 MHz)	10	45 / 40	40 / 35	40	38	1500	2CT:1CT	1CT:1CT
8308	350	16	16 - 20 log (f/30 MHz)	10	45 / 40	40 / 35	40	38	1500	1.25CT:1CT	1CT:1CT
8309	350	16	16 - 20 log (f/30 MHz)	10	45 / 40	40 / 35	40	38	1500	1CT:1.414CT	1CT:1CT
8310	350	16	16 - 20 log (f/30 MHz)	10	45 / 40	40 / 35	40	38	1500	1CT:1.25CT	1CT:1CT
8311	350	16	16 - 20 log (f/30 MHz)	10	45 / 40	40 / 35	40	38	1500	1CT:2CT	1CT:1CT
8312	350	16	16 - 20 log (f/30 MHz)	10	45 / 40	40 / 35	40	38	1500	1CT:2.5CT	1CT:1CT

ISSUE: E 04/12/02 8305-8312



**FILTRAN LTD**  
An ISO 9001 Registered Company

229 Colonnade Road, Ottawa, Ontario, Canada K2E 7K3  
Tel: (613) 226-1626 Fax: (613) 226-7124 [www.filtran.com](http://www.filtran.com)