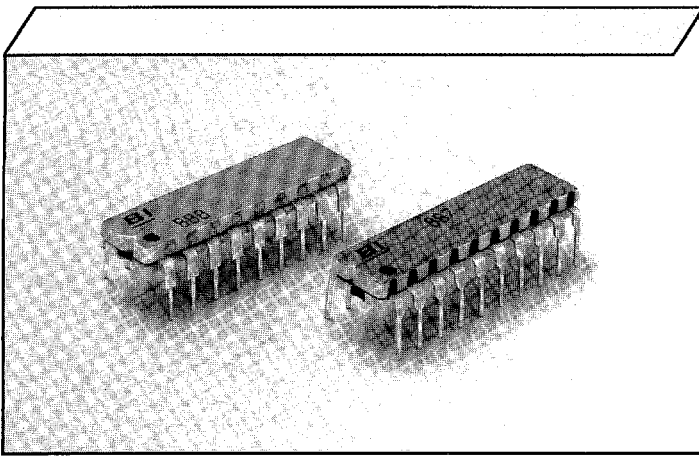


# Model 888, 887 18 & 20 Pin Dual In-Line Thick Film Resistor Network



## Electrical

Standard Resistance Range, Ohms	22 to 2.2 Meg
Standard Resistance Tolerance at 25°C	-1, -3 Circuits ±2% -5 Circuits ±5% (≤33 Ohms = ±2 Ohms)
Operating Temperature Range, °C	-55° to 125°
Temperature Coefficient of Resistance, ppm/°C	±100 (<100 Ohms = ±250)
Temperature Coefficient of Resistance, Tracking, ppm/°C	50
Maximum Operating Voltage, Vdc	100V or √PR
Insulation Resistance, Ohms (Minimum)	10,000 Meg

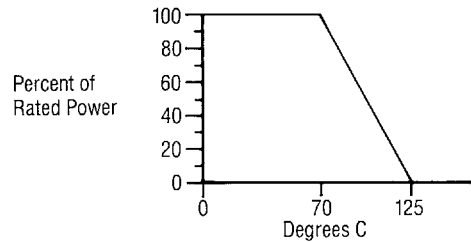
## Mechanical

Lead Material	Copper Alloy, 60/40 Tin-Lead Plating
Substrate Material	Alumina
Resistor Material	Cermet

## Environmental (Per MIL-R-83401)

Thermal Shock Plus Power Conditioning	(ΔR) ±0.70%
Short Time Overload	(ΔR) ±0.50%
Terminal Strength	(ΔR) ±0.25%
Moisture Resistance	(ΔR) ±0.50%
Mechanical Shock	(ΔR) ±0.25%
Vibration Shock	(ΔR) ±0.25%
Low Temperature Storage	(ΔR) ±0.25%
High Temperature Exposure	(ΔR) ±0.50%
Load Life, 1,000 Hours	(ΔR) ±1.00%
Resistance to Soldering Heat (Per MIL-STD-202, Method 210, Cond. B)	(ΔR) ±0.25%
Dielectric Withstanding Voltage, RMS	200V for 1 Minute
Marking Permanency	Per Paragraph 4.6.7
Lead Solderability	Per Paragraph 4.6.6
Flammability	UL-94V-0 Rated
Storage	-55°C to 125°C

## Power Derating Curve



## Power (Watts) Dissipation @ 70°C

Model	Package	Resistor (Per Circuit)		
		-1	-3	-5
887	2.50	.125	.250	.125
888	2.25	.125	.250	.125

## Ordering Information

Model Series	88	7	-5-	R220	/	330	F	Tolerance Code (If other than standard) F = ±1% G = ±2% J = ±5%
Number of Leads								
	8 = 18 Leads							
	7 = 20 Leads							
Circuit Type								R2 Resistance Value Add for -5 circuit only
	1 = Bussed							
	3 = Isolated							
	5 = Dual Terminator							
Resistance Value								

## Applicable Documents

MIL-R-83401	— Resistor Networks, Fixed, Film, General Specification
MIL-STD-202	— Test Methods for Electronics and Electrical Component Parts

Specifications subject to change without notice.

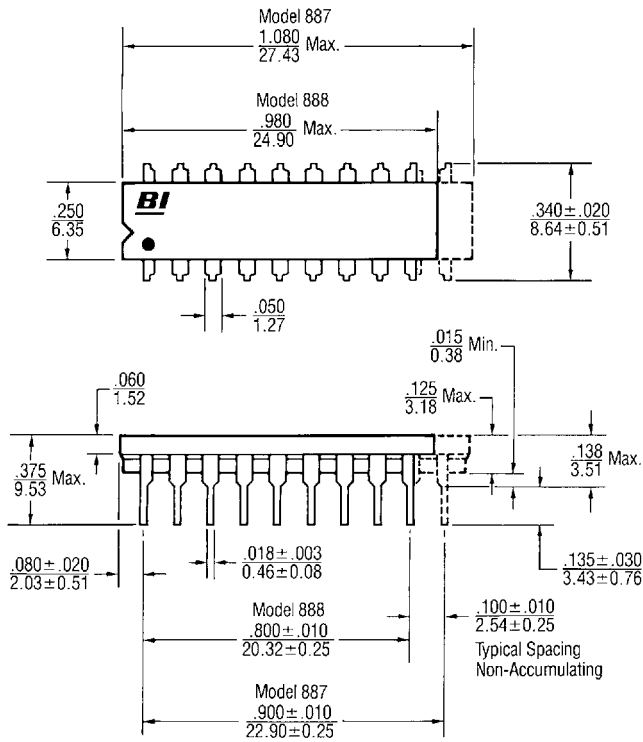
Approved to British Standard Specification BS9450 F0001.

# Beckman Industrial™

Affiliate of Emerson Electric Co.

# Networks

## Outline Dimensions Inches mm

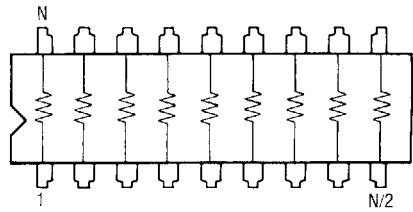


Note: Unless otherwise specified, tolerances are ± .005  
0.13

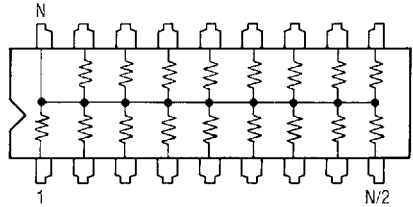
## Schematics: Standard

888: N = 18 Leads  
887: N = 20 Leads

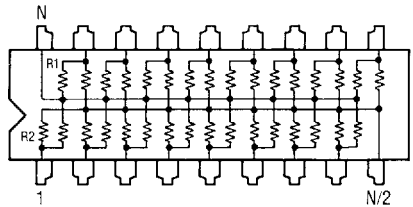
— 3 Circuit  
Isolated  
Resistors



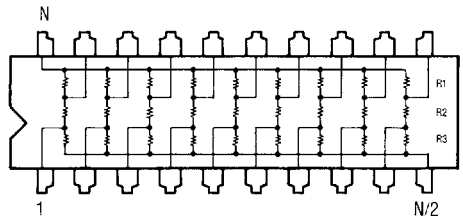
— 1 Circuit  
Bussed  
Resistors



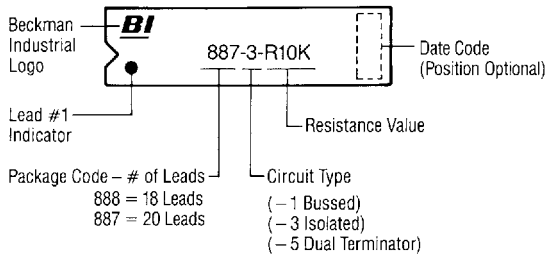
— 5 Circuit  
Dual  
Terminator



— 6 Circuit  
SCSI  
Terminator



## Typical Part Marking

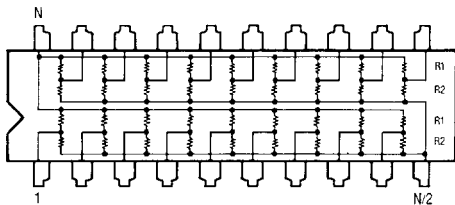
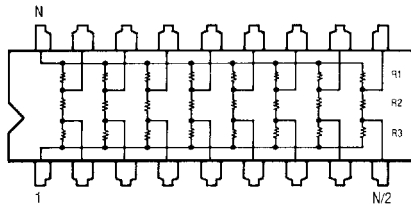


## Packaging

Standard: Magazine  
All units oriented with lead #1 to the same side.  
Magazine: Material = Anti-Static Plastic  
Capacity, Units = 20

## Custom Capabilities

Circuits shown are representative of our custom circuit capability.  
Consult factory for additional applications.



**WORLDWIDE HEADQUARTERS**  
Beckman Industrial Corp.  
Affiliate of Emerson Electric Co.  
4141 Palm Street  
Fullerton, CA 92635-1025  
Telephone: (714) 447-2345  
Fax: (714) 447-2500

**EUROPEAN HEADQUARTERS**  
Beckman Industrial Ltd.  
Queensway, Glenrothes, Fife  
Scotland KY7 5PU  
Telephone: (44) 592 753811  
Fax: (44) 592 756443

**FAR EASTERN HEADQUARTERS**  
Beckman Industrial Japan, Ltd.  
Kakumaru Bldg.  
1-10, Toyo 7-Chome  
Koto-Ku, Tokyo, Japan  
Telephone: Tokyo (03) 3615-1811  
Fax: (03) 3647-2443