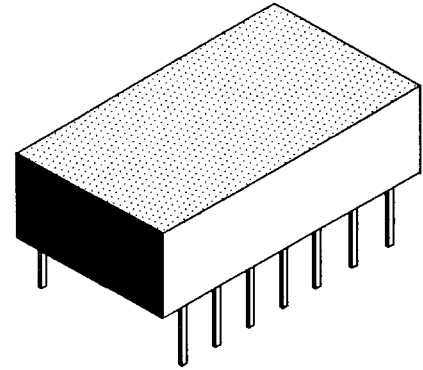


MILITARY GRADE, 14 PIN, 10 TAP TTL ACTIVES

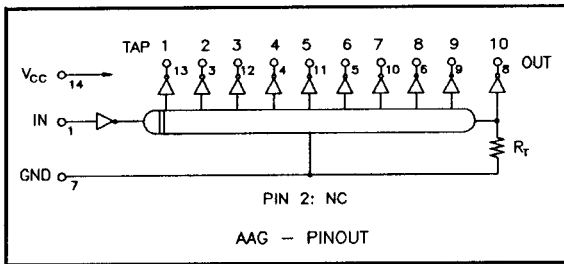
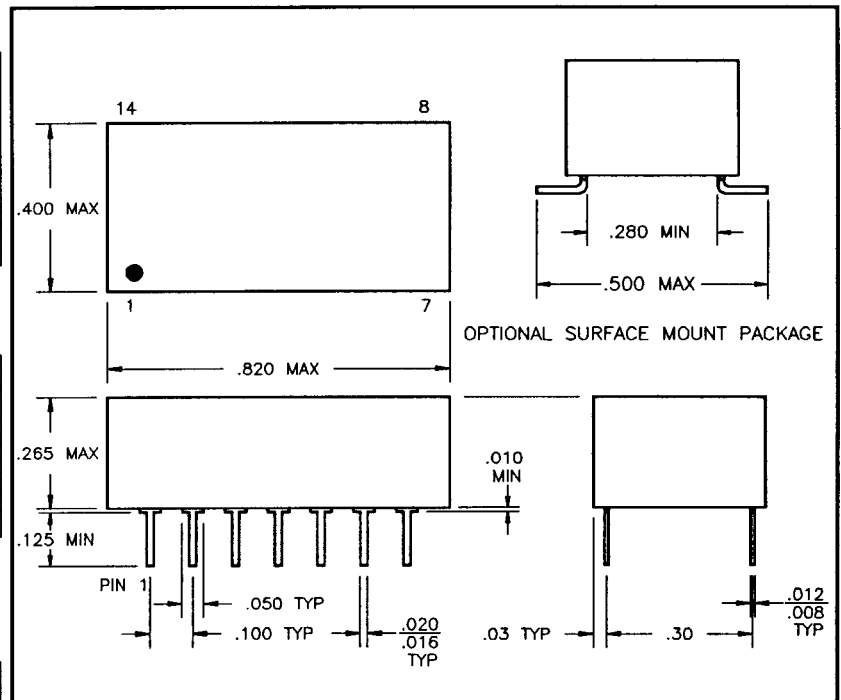
| DC Electrical Characteristics | | Test Conditions | Min | Max | Unit |
|-------------------------------|------------------------------|---|-----|-------------|------|
| Parameter | | | | | |
| V _{OH} | High-Level Output Voltage | V _{CC} =min. V _L =max. I _{OH} =max | 2.7 | | V |
| V _{OL} | Low Level Output Voltage | V _{CC} =min. V _{IH} =min. I _{OL} =max | | 0.5 | V |
| V _{IK} | Input Clamp Voltage | V _{CC} =min. I _I =-18mA | | -1.2 | V |
| I _{IH} | High-Level Input Current | V _{CC} =max. V _{IN} =2.7V | | 50 | uA |
| I _{IL} | Low-Level Input Current | V _{CC} =max. V _{IN} =5.25V | | 1.0 | mA |
| I _{OS} | Short Circuit Output Current | V _{CC} =max. V _{IN} =0.5V (One output at a time) | -40 | -100 | mA |
| I _{CCH} | High-Level Supply Current | V _{CC} =max. V _{IN} =OPEN | | 150 | mA |
| I _{CCL} | Low-Level Supply Current | V _{CC} =max. V _{IN} =0 | | 150 | mA |
| T _{RO} | Output Rise Time | T _d ≤ 500nS (0.75 to 2.4 Volts) T _d > 500nS | | 4 5 | nS |
| N _H | Fanout High-Level Output | V _{CC} =max. V _{OH} =2.7V | | 20 TTL LOAD | |
| N _L | Fanout Low-Level Output | V _{CC} =max. V _{OH} =0.5V | | 10 TTL LOAD | |



| Recommended Operating Conditions | | Min | Max | Unit |
|----------------------------------|--------------------------------|------|------|------|
| V _{CC} | Supply Voltage | 4.75 | 5.25 | V |
| V _{IH} | High-level Input voltage | 2.0 | | V |
| V _{IL} | Low-Level Input Voltage | | 0.8 | V |
| I _{OH} | High-Level Output Current | | -1.0 | mA |
| I _{OL} | Low-Level Output Current | | 20 | mA |
| PW | Pulse Width % of Total Delay | 40 | | % |
| T _A | Operating Free-Air Temperature | -55 | +125 | °C |

| Input Pulse Test Conditions @ 25°C | | Unit |
|------------------------------------|---|-----------|
| E _{IN} | Pulse Input Voltage | 3.2 Volts |
| PW | Pulse Width % of Total Delay | 110 % |
| TRI | Pulse Rise Time (0.75 - 2.4 Volts) | 2.0 nS |
| PRR | Pulse Repetition Rate @ T _d ≤ 200 nS | 1.0 MHz |
| | Pulse Repetition Rate @ T _d > 200 nS | 100 KHz |
| V _{CC} | Supply Voltage | 5.0 Volts |

ADD "S" SUFFIX TO P/N, TO ORDER SURFACE MOUNT PACKAGE.



| TOTAL DELAYS | TAP DELAYS | POLARA P/N |
|--------------|--------------|--------------|
| 2 nS ± 5% | ± 2 nS OR 5% | AAG - PINOUT |
| 50 | 5 | AAG-0050 |
| 100 | 10 | AAG-0100 |
| 150 | 15 | AAG-0150 |
| 200 | 20 | AAG-0200 |
| 250 | 25 | AAG-0250 |
| 300 | 30 | AAG-0300 |
| 500 | 50 | AAG-0500 |

This unit uses a custom designed, hermetically sealed ceramic semiconductor package that meets MIL-M-38510, Paragraph 3.5.1.