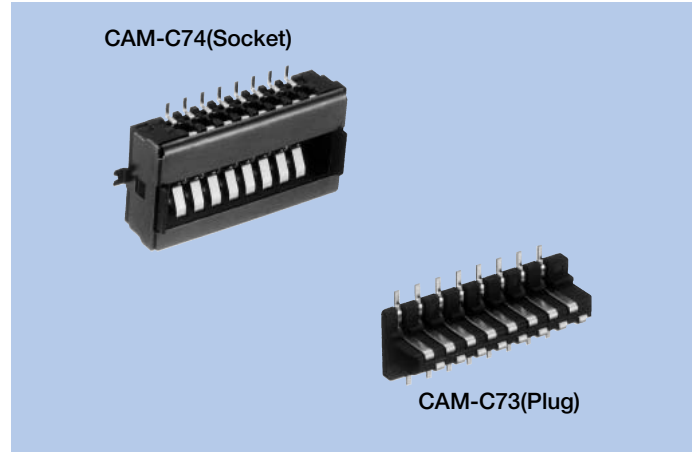


# Detach Connectors CAM-C73 · C74

## FEATURES

1. Due to these connectors, the front panel can be removed or mounted for preventing the car audio from being stolen.
2. The socket has a coupling position guide to absorb play when coupled.
3. A metallic cover is mounted for preventing static electricity.



## HOW TO ORDER

### 1.CAM-C73 (Plug)

**C73-016-02 0-A G G A A**  
 1 2 3 4 5 6 7 8 9

- 1 Series No. (C73)
- 2 No. of contacts (016 : 16pins)
- 3 Housing material (02 : PBT resin)
- 4 UL grade of housing (0 : UL94V-0)
- 5 Connect plating (A : Gold)
- 6 Contact plating thickness (G : 0.3μm)
- 7 Contact pin lead style (G : Angle SMT)
- 8 Accessory for connector outside (A : None)
- 9 Accessory for connector inside (A : None)

### 2.CAM-C74 (Socket)

**C74-016-02 0-A G G A A**  
 1 2 3 4 5 6 7 8 9

- 1 Series No. (C74)
- 2 No. of contacts (016 : 16pins)
- 3 Housing material (02 : PBT resin)
- 4 UL grade of housing (0 : UL94V-0)
- 5 Connect plating (A : Gold)
- 6 Contact plating thickness (G : 0.3μm)
- 7 Contact pin lead style (G : Angle SMT)
- 8 Accessory for connector outside (A : None)
- 9 Accessory for connector inside (A : None)

## SPECIFICATIONS

### ELECTRICAL CHARACTERISTICS

Rated Voltage	14V DC
Rated Current	1A
Withstanding Voltage	500V AC (rms) 1minute
Insulation Resistance	100MΩ min. (at 500V DC)
Contact Resistance	70mΩ max.

### MECHANICAL CHARACTERISTICS

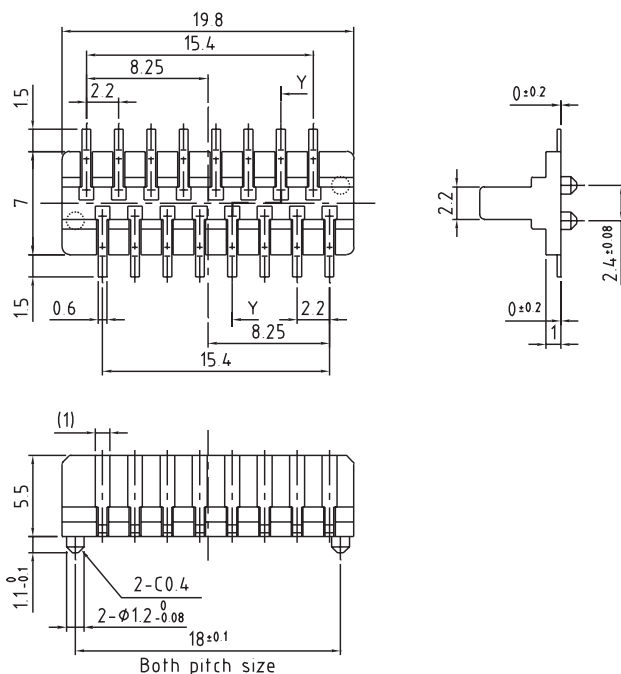
Life (Matching Cycle)	10,000 times
Total Insertion Force	14.7N (1.5kgf) max.
Overall Rebound Force	8.18N (0.835kgf) max.
Using Temperature Range	-30~+85°C

## MATERIAL & FINISH

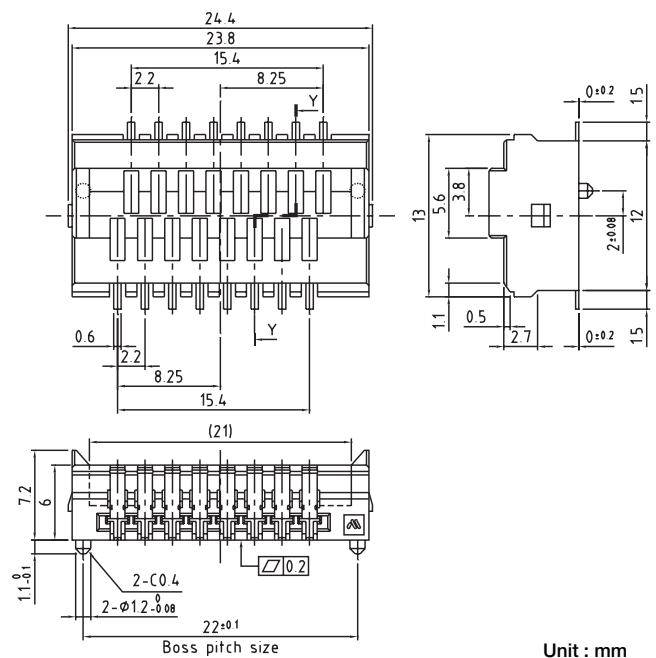
Component Parts		Material	Finish
CAM-C73	Housing	PBT resin	—
	Contact	Copper Alloy	Gold plating
CAM-C74	Housing	PBT resin	—
	Contact	Copper Alloy	Gold plating
	Cover	Copper Alloy	Black nickel plating, Tin reflow plating

## DIMENSIONS

CAM-C73



CAM-C74



Unit : mm