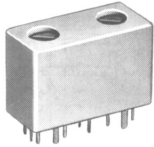
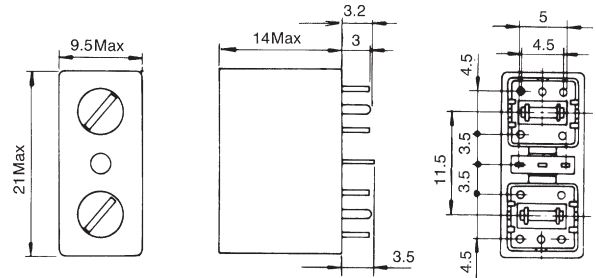


**AM CERAMIC FILTERS WITH MATCHING COIL**
**Description**

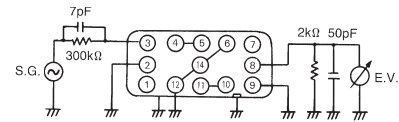
- Quadruple-tuned AM IF filters combining matching coil and CFM2 in resin case.
- Center frequency range: 450 — 470kHz


**Dimensions**


Unit: mm

**Features**

- Can be preset if required
- High selectivity, suited to a wide range of applications
- Low temperature coefficient
- Low spurious response
- Lead-free terminations

**Test Circuit**


Note: 50pF includes test circuit capacitance

**Applications**

- AM radio cassettes, high selectivity radio cassettes
- Wireless data communication equipment

**STANDARD FILTERS SELECTION GUIDE**
**TYPE CFMQ (CERASIZER®/Quadruple-tuned)**

TOKO Part Number	Center Frequency (kHz)	Bandwidth at 6dB (kHz)	Selectivity at $F_o \pm 9\text{kHz}$ (dB)	Ripple in Pass Band (dB)	Input Level for 0.6mV Output (dB)
##CFMQ-004A	450±1.5	5.5 min.	33.0 min.	1.0 max.	82.0±2.5
##CFMQ-001A	455±1.5	5.5 min.	33.0 min.	1.0 max.	82.0±3.0
##CFMQ-002A	460±1.5	5.5 min.	33.0 min.	1.0 max.	87.0±2.5
##CFMQ-010A	468±2.0	5.5 min.	32.0 min.	1.0 max.	85.0±2.0



The information furnished by TOKO, Inc. is believed to be accurate and reliable. However, TOKO reserves the right to make changes or improvements in the design, specification or manufacture of its products without further notice. TOKO does not assume any liability arising from the application or use of any product or circuit described herein, nor for any infringements of patents or other rights of third parties which may result from the use of its products. No license is granted by implication or otherwise under any patent or patent rights of TOKO, Inc.