



SOT-23-3L Encapsulate Three Terminal Voltage Regulator

CJ79L06 Three-terminal negative voltage regulator

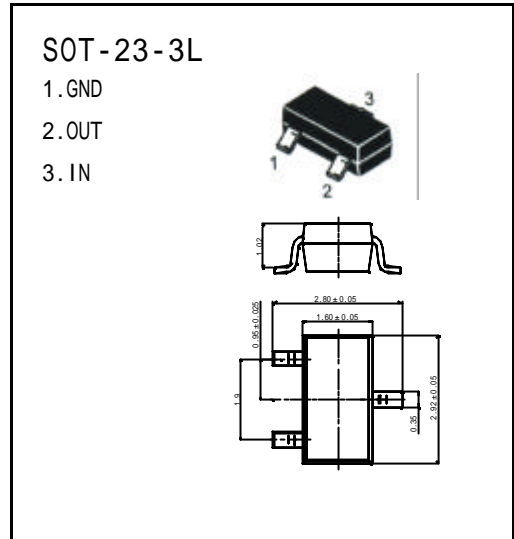
FEATURES

Maximum Output current

$I_{OM}: 0.1\text{ A}$

Output voltage

$V_o: -6\text{ V}$



ABSOLUTE MAXIMUM RATINGS (Operating temperature range applies unless otherwise specified)

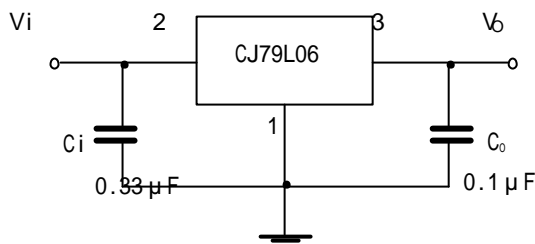
Parameter	Symbol	Value	Units
Input Voltage	V_i	-30	V
Operating Junction Temperature Range	T_{OPR}	0—+125	
Storage Temperature Range	T_{STG}	-55—+150	

ELECTRICAL CHARACTERISTICS

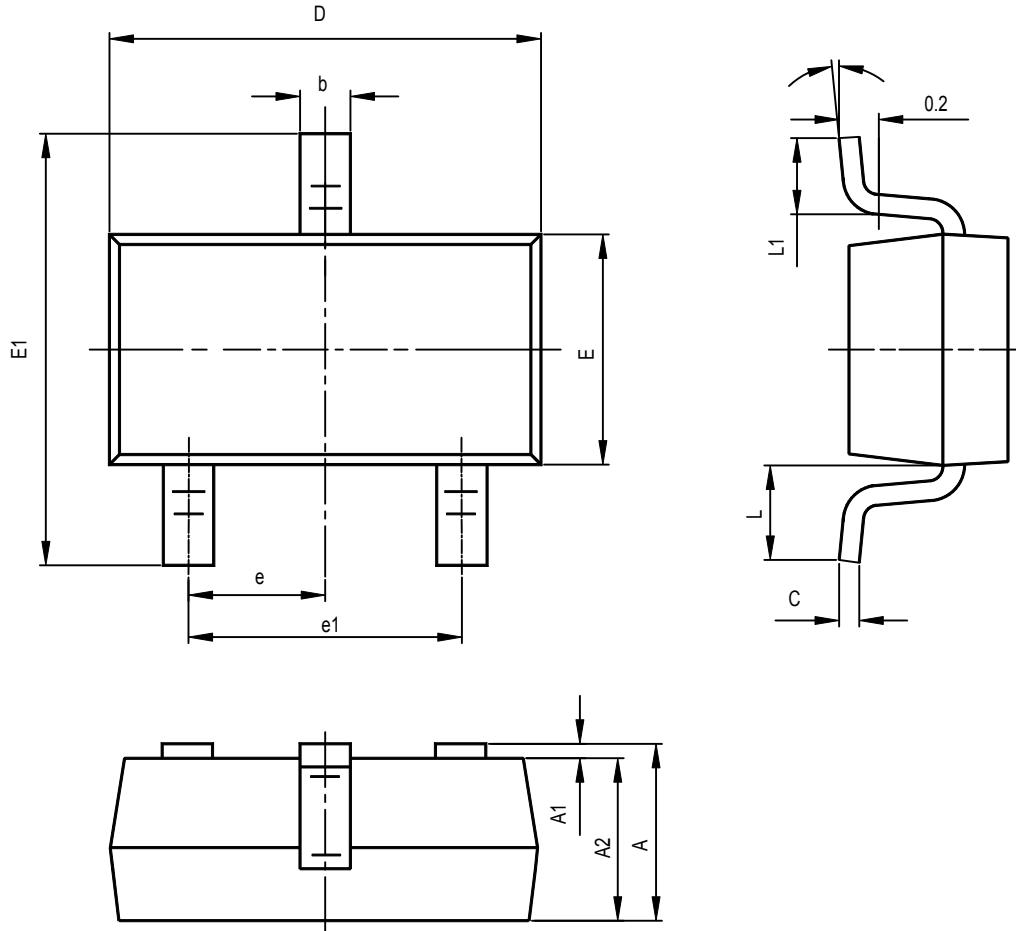
($V_i = -12\text{V}, I_o = 40\text{mA}, 0 < T_j < 125$, $C_1 = 0.33\ \mu\text{F}, C_o = 0.1\ \mu\text{F}$, unless otherwise specified)

Parameter	Symbol	Test conditions	MIN	TYP	MAX	UNIT
Output voltage	V_o	$V_{IN} = -12\text{V}, I_o = 40\text{mA}$	-5.75	-6.0	-6.25	V
Line Regulation	$V_o - V_{IN}$	$V_{IN} = -8 \sim -20\text{V}, I_o = 40\text{mA}$		20	175	mV
Load Regulation	$V_o - I_o$	$V_{IN} = -12\text{V}, I_o = 1 \sim 100\text{mA}$		21	80	mV
Quiescent Current	I_Q	$V_{IN} = -12\text{V}, I_o = 40\text{mA}$			6.0	mA
Ripple Rejection	RR	$V_{IN} = -9\text{V} \sim -19\text{V}, I_o = 40\text{mA}, e_{IN} = 1\text{V}_{P-P}, f = 120\text{Hz}$	41	48		dB
Output Noise Voltage	V_{NO}	$V_{IN} = -12\text{V}, f = 10\text{Hz} \sim 100\text{KH}, I_o = 40\text{mA}$		44		μV

TYPICAL APPLICATION



SOT-23-3L PACKAGE OUTLINE DIMENSIONS



Symbol	Dimensions In Millimeters		Dimensions In Inches	
	Min	Max	Min	Max
A	1.050	1.250	0.041	0.049
A1	0.000	0.100	0.000	0.004
A2	1.050	1.150	0.041	0.045
b	0.300	0.400	0.012	0.016
c	0.100	0.200	0.004	0.008
D	2.820	3.020	0.111	0.119
E	1.500	1.700	0.059	0.067
E1	2.650	2.950	0.104	0.116
e	0.950TPY		0.037TPY	
e1	1.800	2.000	0.071	0.079
L	0.700REF		0.028REF	
L1	0.300	0.600	0.012	0.024
θ	0°	8°	0°	8°