

# FLL1500IU-2C

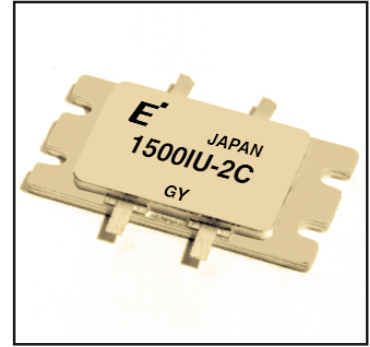
## L-Band High Power GaAs FET

### FEATURES

- Push-Pull Configuration
- High Power Output: 150W (Typ.)
- High PAE: 48% (Typ.)
- Broad Frequency Range: 2100 to 2200 MHz.
- Suitable for class AB operation.

### DESCRIPTION

The FLL1500IU-2C is a 150 Watt GaAs FET that employs a push-pull design that offers ease of matching, greater consistency and a broader bandwidth for high power L-band amplifiers. This product is targeted to reduce the size and complexity of highly linear, high power base station transmitting amplifiers. This new product is well suited for use in W-CDMA and IMT 2000 base station amplifiers as it offers high gain, long term reliability and ease of use.



### APPLICATIONS

- Solid State Base-Station Power Amplifier.
- W-CDMA and IMT 2000 Communication Systems.

### ABSOLUTE MAXIMUM RATINGS (Ambient Temperature Ta=25°C)

Item	Symbol	Condition	Rating	Unit
Drain-Source Voltage	$V_{DS}$		15	V
Gate-Source Voltage	$V_{GS}$		-5	V
Total Power Dissipation	$P_T$	$T_c = 25^\circ\text{C}$	187.5	W
Storage Temperature	$T_{stg}$		-65 to +175	$^\circ\text{C}$
Channel Temperature	$T_{ch}$		+175	$^\circ\text{C}$

Eudyna recommends the following conditions for the reliable operation of GaAs FETs:

1. The drain-source operating voltage ( $V_{DS}$ ) should not exceed 12 volts.
2. The forward and reverse gate currents should not exceed 353 and -103.6 mA respectively with gate resistance of 10 $\Omega$ .
3. The operating channel temperature ( $T_{ch}$ ) should not exceed 145 $^\circ\text{C}$ .

### ELECTRICAL CHARACTERISTICS (Ambient Temperature Ta=25°C)

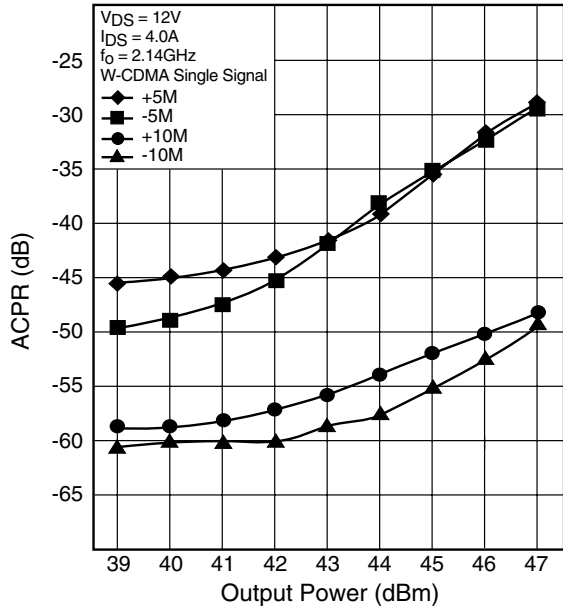
Item	Symbol	Conditions	Limits			Unit	
			Min.	Typ.	Max.		
Drain Current	$I_{DSS}$	$V_{DS} = 5V, V_{GS} = 0V$	-	16	-	A	
Pinch-Off Voltage	$V_p$	$V_{DS} = 5V, I_{DS} = 440mA$	-0.1	-0.3	-0.5	V	
Gate-Source Breakdown Voltage	$V_{GSO}$	$I_{GS} = -4.4mA$	-5	-	-	V	
Output Power	$P_{out}$	$V_{DS} = 12V$ $f = 2.17\text{ GHz}$	50.8	51.8	-	dBm	
Linear Gain	GL		11.0	12.0	-	dB	
Drain Current	$I_{DSR}$		$I_{DS} = 4.0A$ $P_{in} = 43.0dBm$	-	23	30	A
Power-Added Efficiency	$\eta_{add}$		-	48	-	%	
Thermal Resistance	$R_{th}$	Channel to Case	-	0.55	0.8	$^\circ\text{C/W}$	

CASE STYLE: IU

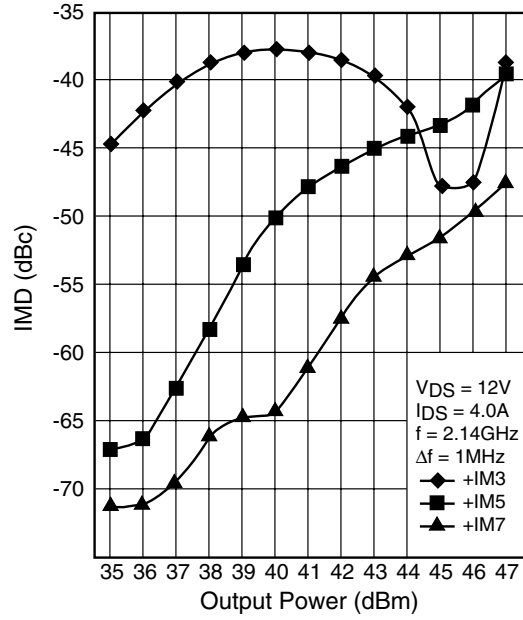
# FLL1500IU-2C

## L-Band High Power GaAs FET

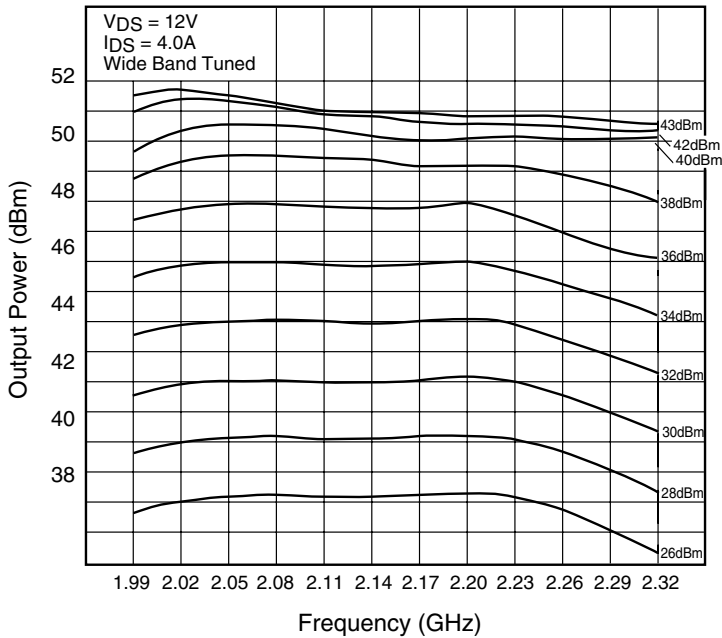
**ACPR vs. OUTPUT POWER**



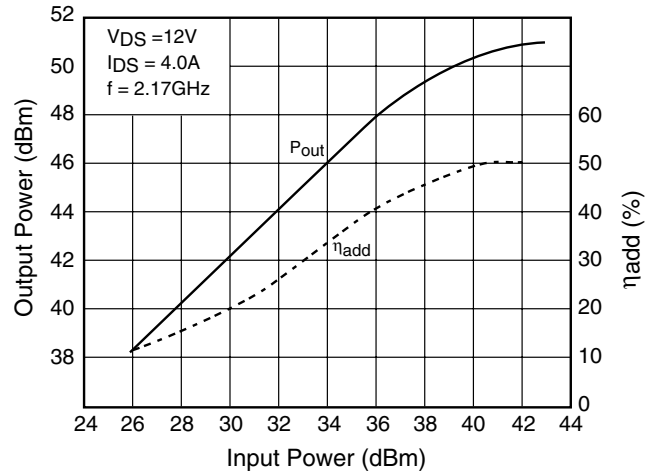
**IMD vs. OUTPUT POWER**



**OUTPUT POWER vs. FREQUENCY**



**OUTPUT POWER vs. INPUT POWER**



# FLL1500IU-2C

## L-Band High Power GaAs FET

### S-PARAMETERS

$V_{DS} = 12V, I_{DS} = 2000mA$

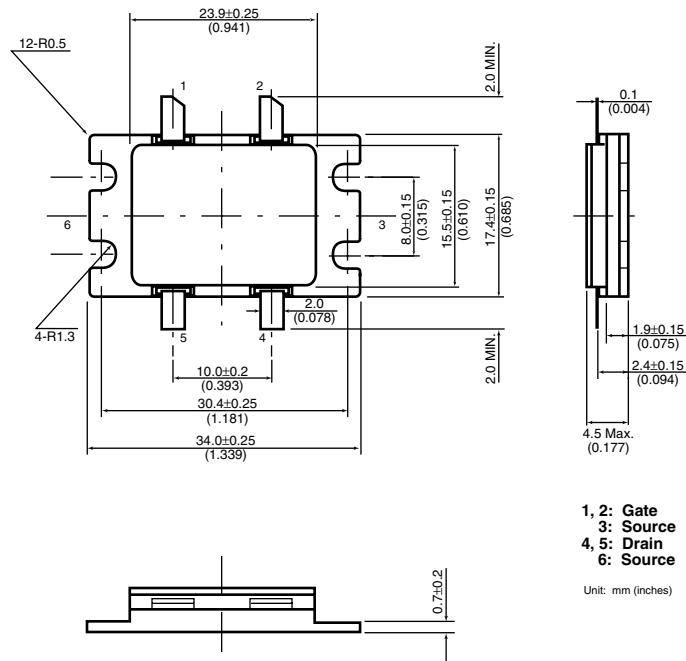
FREQUENCY (MHZ)	S11		S21		S12		S22	
	MAG	ANG	MAG	ANG	MAG	ANG	MAG	ANG
1000	.930	156.2	.455	54.5	.010	72.9	.892	161.1
1100	.923	152.7	.526	49.4	.013	66.7	.875	158.4
1200	.901	148.4	.648	42.1	.013	60.6	.850	155.8
1300	.886	143.9	.810	31.1	.015	56.1	.823	153.1
1400	.855	138.0	1.035	17.1	.016	46.3	.796	150.7
1500	.813	131.0	1.351	0.5	.019	28.1	.763	148.7
1600	.753	121.1	1.798	-19.6	.021	4.2	.738	146.5
1700	.653	106.2	2.412	-43.9	.023	-33.4	.721	142.2
1800	.468	77.4	3.261	-73.8	.031	-76.4	.677	134.2
1900	.207	-11.6	3.968	-114.9	.042	-126.2	.520	125.6
2000	.458	-124.0	3.749	-158.0	.047	-176.8	.369	140.7
2100	.668	-162.2	3.006	168.6	.045	147.0	.429	155.8
2200	.745	175.8	2.427	145.8	.039	124.5	.502	154.3
2300	.761	158.8	2.122	127.1	.036	100.6	.535	148.2
2400	.749	142.4	2.049	111.2	.034	85.9	.548	139.7
2500	.716	126.3	2.119	94.1	.031	65.1	.534	130.0
2600	.658	102.0	2.264	71.4	.034	37.7	.500	116.1
2700	.591	66.0	2.434	43.1	.035	-3.3	.455	94.5
2800	.553	14.6	2.526	10.3	.044	-53.7	.405	59.0
2900	.613	-39.8	2.347	-29.3	.049	-90.4	.400	9.0
3000	.701	-80.3	1.765	-67.7	.042	-117.2	.480	-39.5
3100	.766	-107.6	1.180	-95.2	.045	-128.4	.595	-73.6
3200	.803	-126.5	.820	-114.6	.047	-127.8	.694	-97.2
3300	.826	-140.5	.622	-127.6	.058	-136.8	.772	-114.0
3400	.839	-151.8	.500	-140.7	.069	-135.3	.822	-126.6
3500	.844	-161.6	.420	-149.7	.080	-145.7	.858	-136.9
3600	.820	-170.9	.366	-156.5	.096	-146.2	.880	-145.5
3700	.817	-175.9	.369	-163.6	.098	-152.4	.898	-152.7
3800	.816	175.6	.360	-172.0	.124	-157.2	.900	-158.8
3900	.793	167.0	.380	179.1	.128	-158.2	.905	-164.8
4000	.757	157.5	.387	166.8	.155	-164.5	.904	-169.8

Note: This S-Parameter data shows measurements performed on a single-ended push-pull FET. These parameters should be used to determine the calculated Push-Pull S-Parameter amplifier designs.

# FLL1500IU-2C

## L-Band High Power GaAs FET

### Case Style "IU"



For further information please contact:

### Eudyna Devices USA Inc.

2355 Zanker Rd.  
San Jose, CA 95131-1138, U.S.A.  
TEL: (408) 232-9500  
FAX: (408) 428-9111  
[www.us.eudyna.com](http://www.us.eudyna.com)

### Eudyna Devices Europe Ltd.

Network House  
Norreys Drive  
Maidenhead, Berkshire SL6 4FJ  
United Kingdom  
TEL: +44 (0) 1628 504800  
FAX: +44 (0) 1628 504888

### Eudyna Devices Asia Pte Ltd.

Hong Kong Branch  
Rm. 1101, Ocean Centre, 5 Canton Rd.  
Tsim Sha Tsui, Kowloon, Hong Kong  
TEL: +852-2377-0227  
FAX: +852-2377-3921

### Eudyna Devices Inc.

Sales Division  
1, Kanai-cho, Sakae-ku  
Yokohama, 244-0845, Japan  
TEL: +81-45-853-8156  
FAX: +81-45-853-8170

### CAUTION

Eudyna Devices Inc. products contain **gallium arsenide (GaAs)** which can be hazardous to the human body and the environment. For safety, observe the following procedures:

- Do not put this product into the mouth.
- Do not alter the form of this product into a gas, powder, or liquid through burning, crushing, or chemical processing as these by-products are dangerous to the human body if inhaled, ingested, or swallowed.
- Observe government laws and company regulations when discarding this product. This product must be discarded in accordance with methods specified by applicable hazardous waste procedures.

Eudyna Devices Inc. reserves the right to change products and specifications without notice. The information does not convey any license under rights of Eudyna Devices Inc. or others.

© 2004 Eudyna Devices USA Inc.  
Printed in U.S.A.