

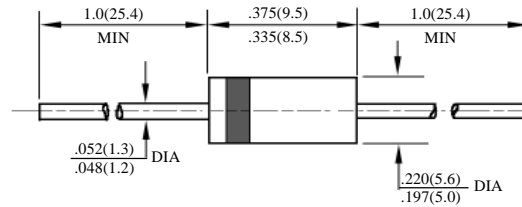
FR301G – FR307G

快速玻钝二极管  
FAST GPP DIODES

| 型号<br>TYPE | 最大反向<br>峰值电压<br>Maximum<br>Peak Reverse<br>Voltage | 最大平均正向电流<br>Maximum Average<br>Rectified Current<br>@ Half-Wave<br>Resistive Load 60Hz |    | 最大正向浪涌电流<br>Maximum<br>Forward Peak<br>Surge Current @<br>8.3ms Superimposed | 最大反向漏电流<br>Maximum<br>Reverse<br>Current @ PRV<br>@ T <sub>A</sub> =25°C | 最大正向电压<br>Maximum<br>Forward<br>Voltage<br>@ T <sub>A</sub> =25°C |                 | 最大反向<br>恢复时间<br>Maximum<br>Reverse<br>Recovery Time | 外型尺寸<br>Package<br>Dimensions |
|------------|--|--|----|--|--|---|-----------------|---|-------------------------------|
|            |  | I <sub>O</sub> @ T <sub>L</sub>  |    |  |  | I <sub>FM</sub> (Surge)   | I <sub>R</sub>  |   |                               |
|            | PRV  | I <sub>O</sub> @ T <sub>L</sub>  |    | I <sub>FM</sub> (Surge)  | I <sub>R</sub>   | I <sub>FM</sub>   | V <sub>FM</sub> | T <sub>rr</sub>                                     |                               |
|            | V <sub>PK</sub>                                    | A <sub>AV</sub>  | °C | A <sub>PK</sub>  | μA <sub>dc</sub>   | A <sub>PK</sub>   | V <sub>PK</sub> | ns  |                               |
| FR301G     | 50   |  |    |  |  |   |                 | 150   | DO –<br>201AD                 |
| FR302G     | 100  |  |    |  |  |   |                 | 150   |                               |
| FR303G     | 200  |  |    |  |  |   |                 | 150   |                               |
| FR304G     | 400  | 3.0  | 55 | 125  | 5.0  | 3.0   | 1.3             | 150   |                               |
| FR305G     | 600  |  |    |  |  |   |                 | 250   |                               |
| FR306G     | 800  |  |    |  |  |   |                 | 500   |                               |
| FR307G     | 1000   |  |    |  |  |   |                 | 500   |                               |

T<sub>rr</sub>测试条件: I<sub>F</sub> = 0.5A, I<sub>R</sub> = 1.0A, I<sub>RR</sub> = 0.25A

T<sub>rr</sub> Test Conditions: I<sub>F</sub> = 0.5A, I<sub>R</sub> = 1.0A, I<sub>RR</sub> = 0.25A



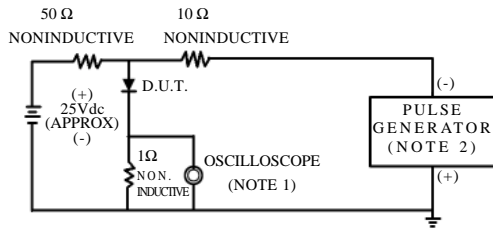
DO – 201AD

FR301G-FR306G

快速 GPP 二极管额定值与特性曲线

RATING & CHARACTERISTIC CURVES OF FAST GPP DIODE

FIG.1-TEST CIRCUIT DIAGRAM AND REVERSE RECOVERY TIME CHARACTERISTIC



NOTES:1.Rise Time=7ns max.  
Input Impedance=1megohm.22pF.  
2.Rise Time=10ns max.  
Source Impedance=50 ohms.

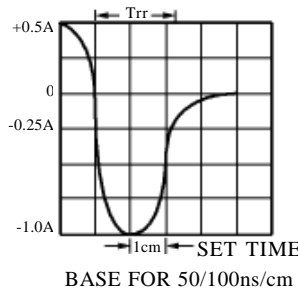


FIG. 2 – TYPICAL FORWARD CURRENT DERATING CURVE

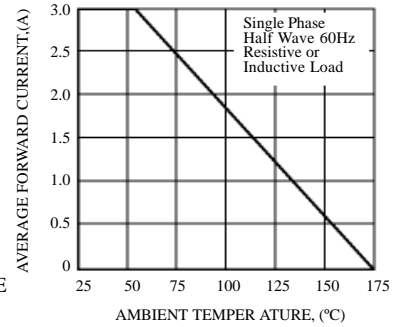


FIG. 3 – TYPICAL INSTANTANEOUS FORWARD CHARACTERISTICS

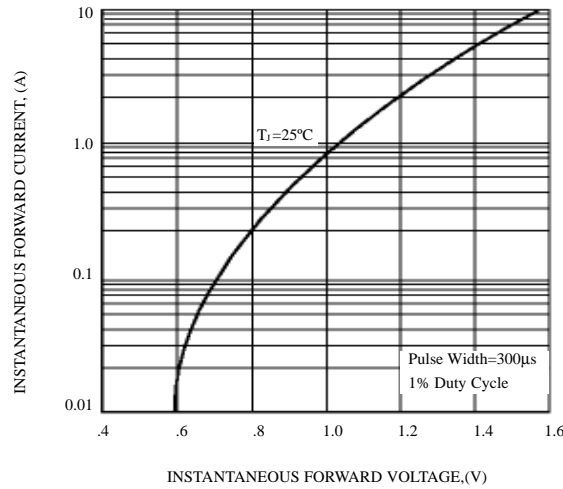


FIG. 4 – MAXIMUM NON-REPETITIVE FORWARD SURGE CURRENT

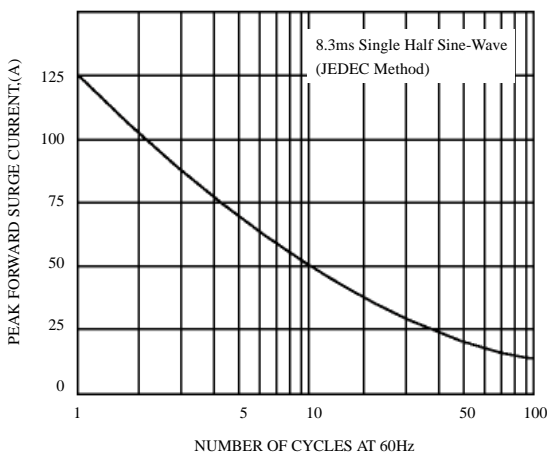


FIG. 5 – TYPICAL JUNCTION CAPACITANCE

