

Ultra Low Output Voltage Linear N-FET Controller

Features

- 0.5V±2% Reference Voltage
- Adjustable Output Voltage Down to 0.5V
- MLCC and POSCAP Stable
- Enable Control
- Power Good Signal Output
- Under Voltage Short Circuit Protection
- Drive N-Channel MOSFETs
- Output Voltage Discharge (G9338-XXX)
- SOT-23-6 Package

Applications

- Notebook or Desknote Computers
- Motherboards
- Graphic Cards
- Ultra-Low-Dropout Voltage Regulators

General Description

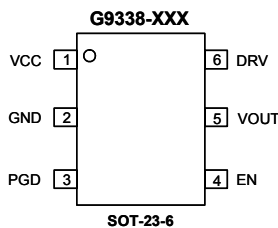
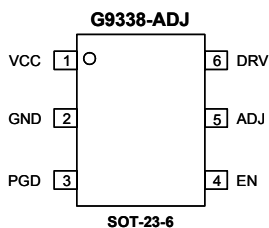
The G9338 series are ultra low output voltage linear N-FET controllers designed to simplify power management for notebook computers. Both voltage adjustable (G9338-ADJ) version and voltage fixed (G9338-XXX) version are available for SOT23-6 package. The output voltage can be adjusted from 0.5V to 2.5V for G9338-ADJ. And there are four fixed voltage (1.05V, 1.35V, 1.5V, 1.8V) available for G9338-XXX.

Both versions feature a 0.5V reference voltage with ±2% accuracy providing tight regulation of the output voltage, enable control, open drain power good signal, under-voltage protection and soft start. The G9338-XXX features additional output voltage discharge function during shutdown.

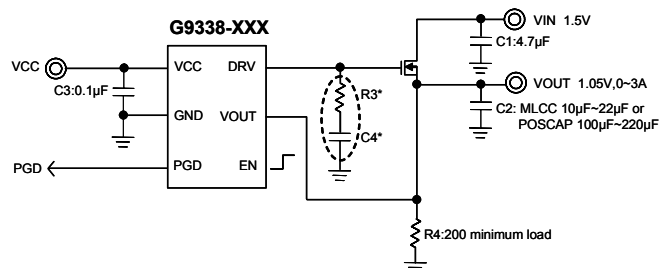
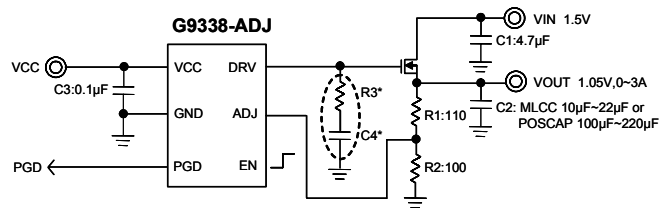
Ordering Information

ORDER NUMBER	ORDER NUMBER (Pb free)	MARKING	TEMP. RANGE	PACKAGE
G9338-ADJTBU	G9338-ADJTBUf	938Ax	-40°C to 85°C	SOT-23-6
G9338-105TBU	G9338-105TBUf	938Bx	-40°C to 85°C	SOT-23-6
G9338-135TBU	G9338-135TBUf	938Cx	-40°C to 85°C	SOT-23-6
G9338-150TBU	G9338-150TBUf	938Dx	-40°C to 85°C	SOT-23-6
G9338-180TBU	G9338-180TBUf	938Ex	-40°C to 85°C	SOT-23-6

Pin Configuration



Typical Application Circuit



*R3/C4 are options when using MLCC output capacitor