

HPI - 6FER2

The HPI - 6FER2 is a high - output, high - speed silicon photodiode mounted in a side - viewing plastic package with visible light cutoff filter. This photodiode is both compact and easy to mount.

FEATURES

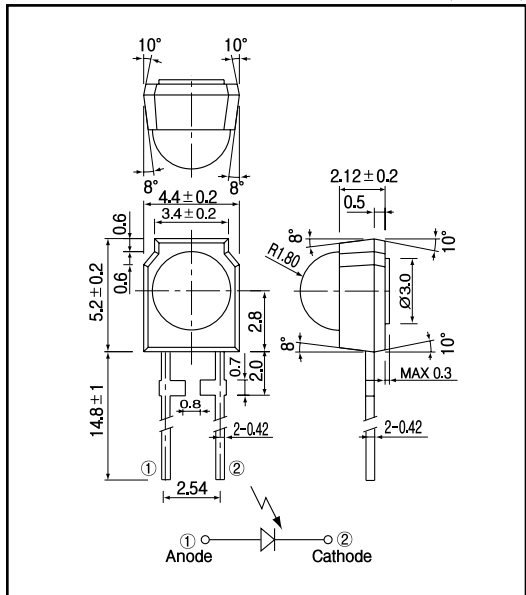
- Compact visible ray cut off mold type
- High speed response

APPLICATIONS

- Optical transmission
- Optic receiver modules

DIMENSIONS

(Unit : mm)



MAXIMUM RATINGS

(Ta=25)

Item	Symbol	Rating	Unit
Reverse voltage	V _r	35	V
Power dissipation	P _b	150	mW
Operating temp.	T _{opr.}	- 30 +70	
Storage temp.	T _{stg.}	- 40 +80	
Soldering temp.*1	T _{sol.}	260	

*1.For MAX.5 seconds at the position of 2 mm from the package

ELECTRO-OPTICAL CHARACTERISTICS

(Ta=25)

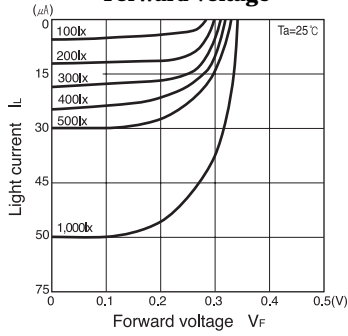
Item	Symbol	Conditions	Min.	Typ.	Max.	Unit.
Open circuit voltage	V _{oc}	E _v = 1,000lx ²		0.38		V
Short circuit current	I _{sc}	E _v = 1,000lx ²		56		μA
Curve factor	C.F.		0.55			—
Dark current	I _d	V _r = 10V			100	nA
Capacitance	C _t	V = 0V, f = 1MHz		48		pF
Temperature coefficient of V _{oc}	t			- 2.2		mV/
Temperature coefficient of I _{sc}	t			0.18		%/
Spectral sensitivity				700 1100		nm
Peak wavelength	ρ			1000		nm
Half angle				±50		deg.

*2.Color temp. =2856K standard Tungsten lamp

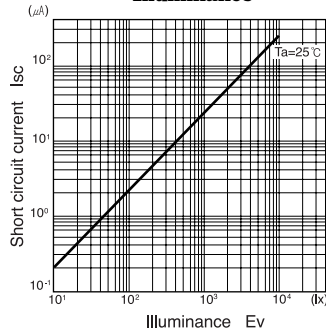
PIN Photodiode

HPI - 6FER2

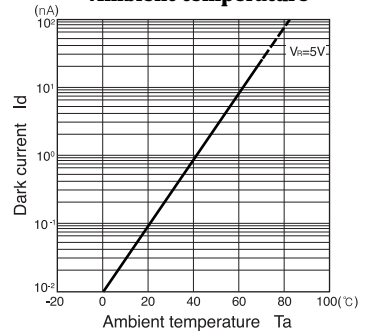
Light current Vs. Forward voltage



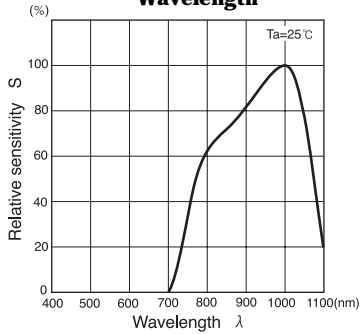
Short circuit current Vs. Illuminance



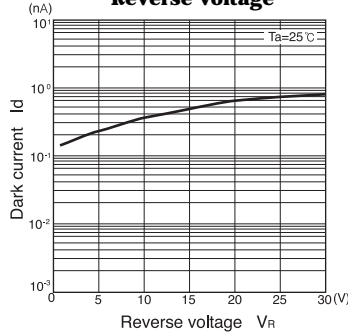
Dark current Vs. Ambient temperature



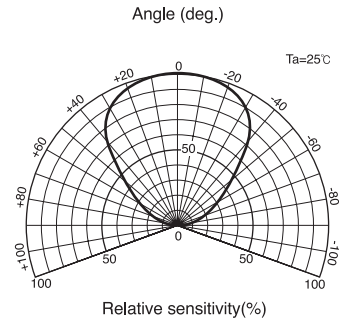
Relative sensitivity Vs. Wavelength



Dark current Vs. Reverse voltage



Radiant Pattern



Capacitance between terminals Vs. Reverse voltage

