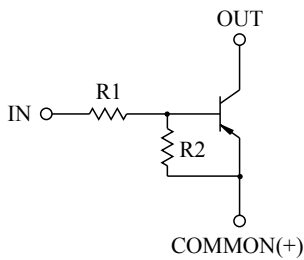


SWITCHING APPLICATION.
INTERFACE CIRCUIT AND DRIVER CIRCUIT APPLICATION.

FEATURES

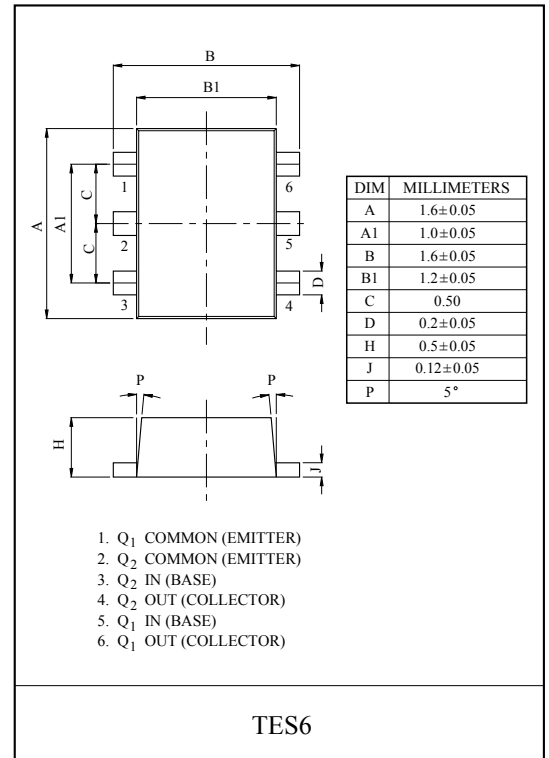
- With Built-in Bias Resistors
- Simplify Circuit Design
- Reduce a Quantity of Parts and Manufacturing Process
- High Packing Density.

EQUIVALENT CIRCUIT

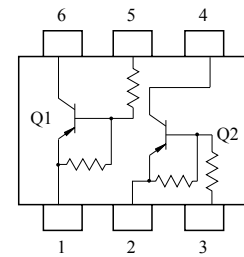


BIAS RESISTOR VALUES

TYPE NO.	R1(kΩ)	R2(kΩ)
KRA727E	10	47
KRA728E	22	47
KRA729E	47	22



EQUIVALENT CIRCUIT (TOP VIEW)



MAXIMUM RATING (Ta=25°C)

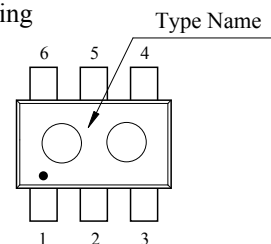
CHARACTERISTIC		SYMBOL	RATING	UNIT
Output Voltage	KRA727E~729E	V _O	-50	V
Input Voltage	KRA727E	V _I	-30, 6	V
	KRA728E		-40, 7	
	KRA729E		-40, 15	
Output Current	KRA727E~729E	I _O	-100	mA
Power Dissipation		P _D *	200	mW
Junction Temperature		T _j	150	°C
Storage Temperature Range		T _{stg}	-55~150	°C

* Total Rating.

MARK SPEC

TYPE	KRA727E	KRA728E	KRA729E
MARK	JH	JI	JJ

Marking



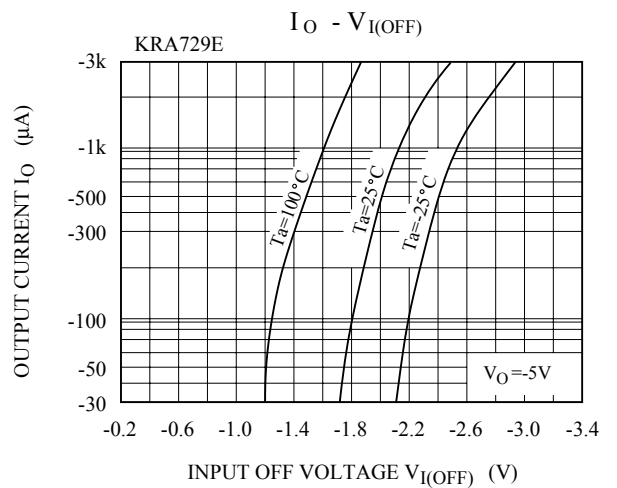
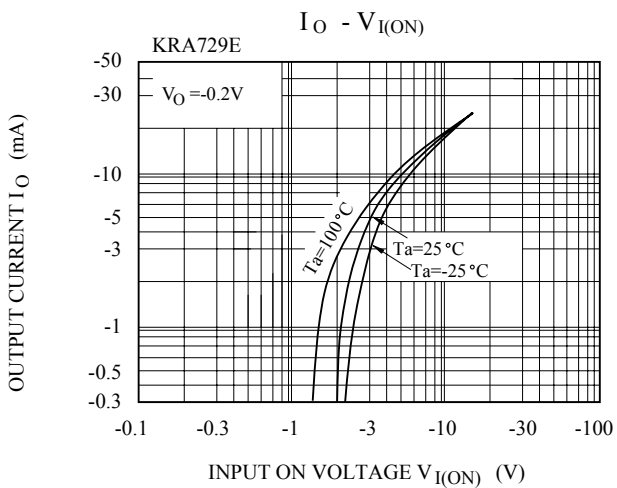
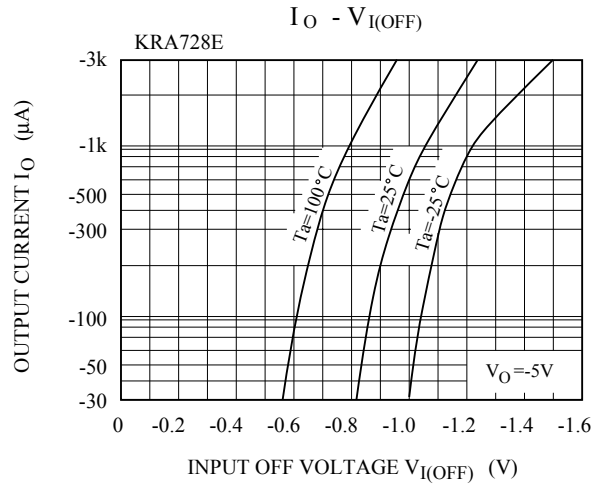
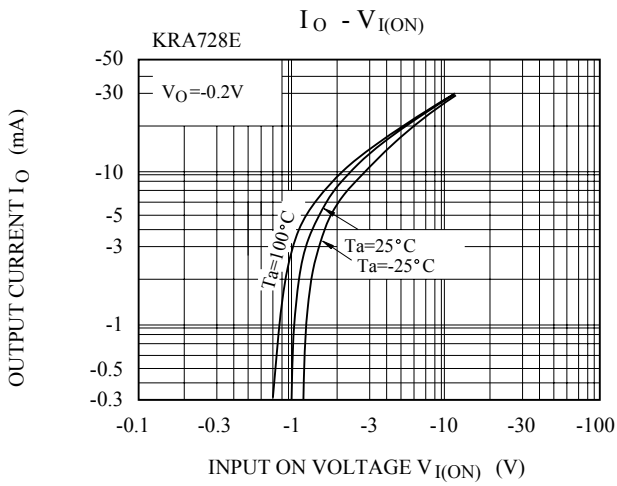
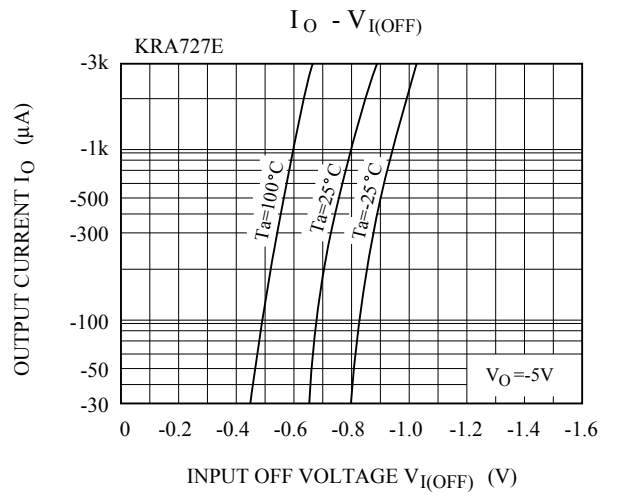
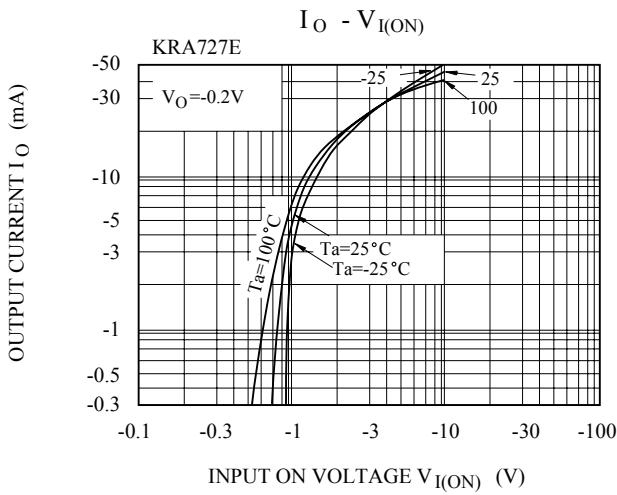
KRA727E~KRA729E

ELECTRICAL CHARACTERISTICS (Ta=25°C)

CHARACTERISTIC		SYMBOL	TEST CONDITION	MIN.	TYP.	MAX.	UNIT	
Output Cut-off Current	KRA727E ~ 729E	$I_{O(OFF)}$	$V_O=-50V, V_I=0$	-	-	-500	nA	
DC Current Gain	KRA727E	G_I	$V_O=-5V, I_O=-10mA$	80	150	-		
	KRA728E			80	150	-		
	KRA729E			70	140	-		
Output Voltage	KRA727E ~ 729E	$V_{O(ON)}$	$I_O=-10mA, I_I=-0.5mA$	-	-0.1	-0.3	V	
Input Voltage (ON)	KRA727E	$V_{I(ON)}$	$V_O=-0.2V, I_O=-5mA$	-	-1.2	-1.8	V	
	KRA728E			-	-1.8	-2.6		
	KRA729E			-	-3.0	-5.8		
Input Voltage (OFF)	KRA727E	$V_{I(OFF)}$	$V_O=-5V, I_O=-0.1mA$	-0.5	-0.75	-	V	
	KRA728E			-0.6	-0.88	-		
	KRA729E			-1.5	-1.82	-		
Transition Frequency	KRA727E ~ 729E	f_T^*	$V_O=-10V, I_O=-5mA$	-	200	-	MHz	
Input Current	KRA727E	I_I	$V_I=-5V$	-	-	-0.88	mA	
	KRA728E			-	-	-0.36		
	KRA729E			-	-	-0.16		
Switching Time	Rise Time	t_r	$V_O=-5V, V_{IN}=-5V$ $R_L=1k\Omega$	-	0.07	-	μS	
				KRA728E	-	0.20		-
				KRA729E	-	0.38		-
	Storage Time	t_{stg}		KRA727E	-	1.1		-
				KRA728E	-	1.3		-
				KRA729E	-	0.7		-
	Fall Time	t_f		KRA727E	-	0.35		-
				KRA728E	-	0.4		-
				KRA729E	-	0.48		-

Note : * Characteristic of Transistor Only.

KRA727E~KRA729E



KRA727E~KRA729E

