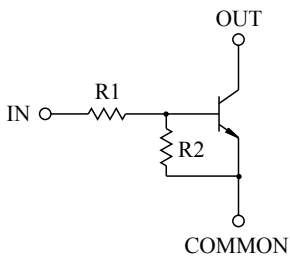


SWITCHING APPLICATION.  
INTERFACE CIRCUIT AND DRIVER CIRCUIT APPLICATION.

### FEATURES

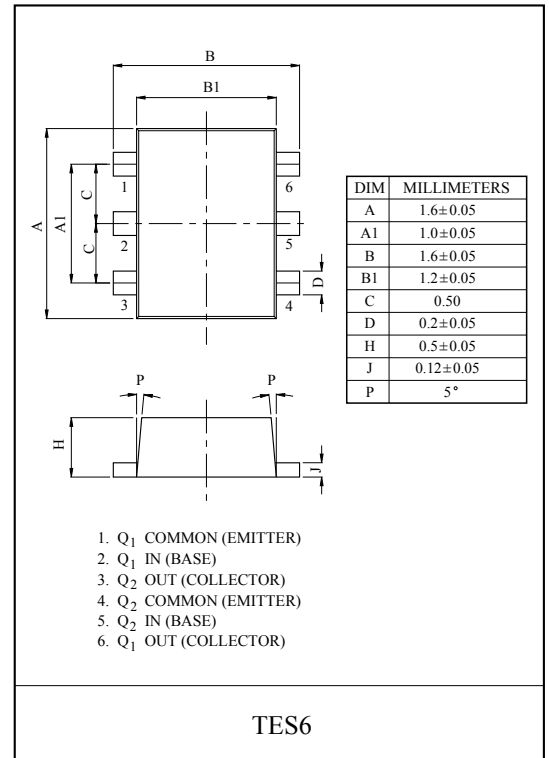
- With Built-in Bias Resistors.
- Simplify Circuit Design.
- Reduce a Quantity of Parts and Manufacturing Process.
- High Packing Density.

### EQUIVALENT CIRCUIT

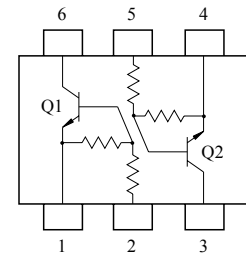


### BIAS RESISTOR VALUES

TYPE NO.	R1(kΩ)	R2(kΩ)
KRC851E	4.7	4.7
KRC852E	10	10
KRC853E	22	22
KRC854E	47	47
KRC855E	2.2	47
KRC856E	4.7	47



### EQUIVALENT CIRCUIT (TOP VIEW)



### MAXIMUM RATING (Ta=25°C)

CHARACTERISTIC		SYMBOL	RATING	UNIT
Output Voltage	KRC851E ~ 856E	$V_O$	50	V
Input Voltage	KRC851E	$V_I$	20, -10	V
	KRC852E		30, -10	
	KRC853E		40, -10	
	KRC854E		40, -10	
	KRC855E		12, -5	
	KRC856E		20, -5	
Output Current	KRC851E ~ 856E	$I_O$	100	mA
Power Dissipation		$P_D^*$	200	mW
Junction Temperature		$T_j$	150	°C
Storage Temperature Range		$T_{stg}$	-55 ~ 150	°C

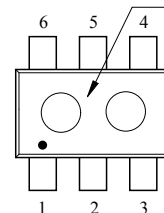
\* Total Rating.

### MARK SPEC

TYPE	KRC851E	KRC852E	KRC853E	KRC854E	KRC855E	KRC856E
MARK	NA	NB	NC	ND	NE	NF

### Marking

Type Name



# KRC851E~KRC856E

## ELECTRICAL CHARACTERISTICS (Ta=25°C)

CHARACTERISTIC		SYMBOL	TEST CONDITION	MIN.	TYP.	MAX.	UNIT
Output Cut-off Current	KRC851E ~ 856E	$I_{O(OFF)}$	$V_O=50V, V_I=0$	-	-	500	nA
DC Current Gain	KRC851E	$G_I$	$V_O=5V, I_O=10mA$	30	55	-	
	KRC852E			50	80	-	
	KRC853E			70	120	-	
	KRC854E			80	200	-	
	KRC855E			80	200	-	
	KRC856E			80	200	-	
Output Voltage	KRC851E ~ 856E	$V_{O(ON)}$	$I_O=10mA, I_I=0.5mA$	-	0.1	0.3	V
Input Voltage (ON)	KRC851E	$V_{I(ON)}$	$V_O=0.2V, I_O=5mA$	-	1.5	2.0	V
	KRC852E			-	1.8	2.4	
	KRC853E			-	2.1	3.0	
	KRC854E			-	2.8	5.0	
	KRC855E			-	0.8	1.1	
	KRC856E			-	0.9	1.3	
Input Voltage (OFF)	KRC851E ~ 854E	$V_{I(OFF)}$	$V_O=5V, I_O=0.1mA$	1.0	1.2	-	V
	KRC855E ~ 856E			0.5	0.65	-	
Transition Frequency	KRC851E ~ 856E	$f_T^*$	$V_O=10V, I_O=5mA$	-	200	-	MHz
Input Current	KRC851E	$I_I$	$V_I=5V$	-	-	1.8	mA
	KRC852E			-	-	0.88	
	KRC853E			-	-	0.36	
	KRC854E			-	-	0.18	
	KRC855E			-	-	3.6	
	KRC856E			-	-	1.8	

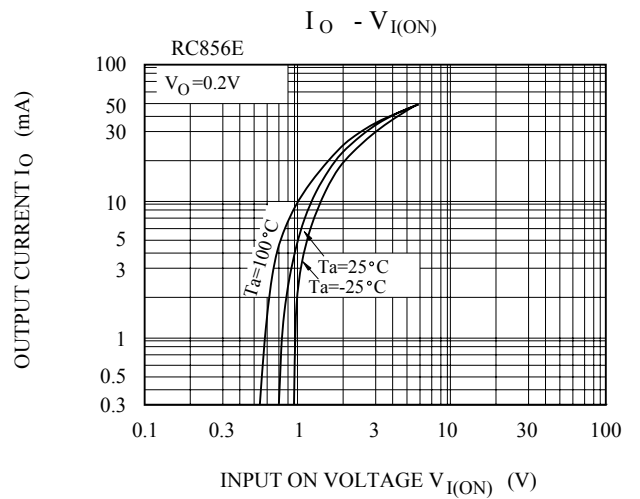
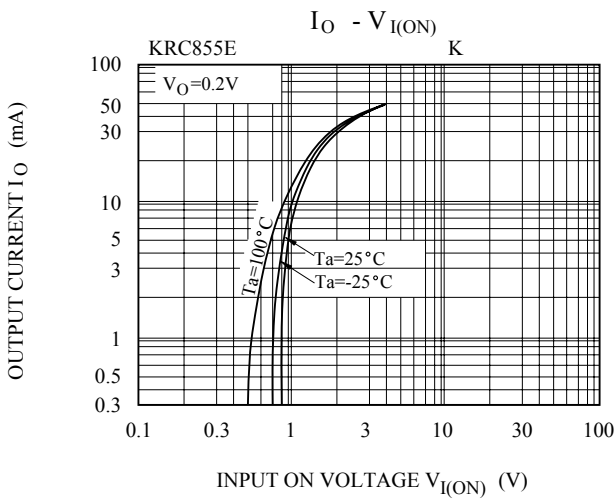
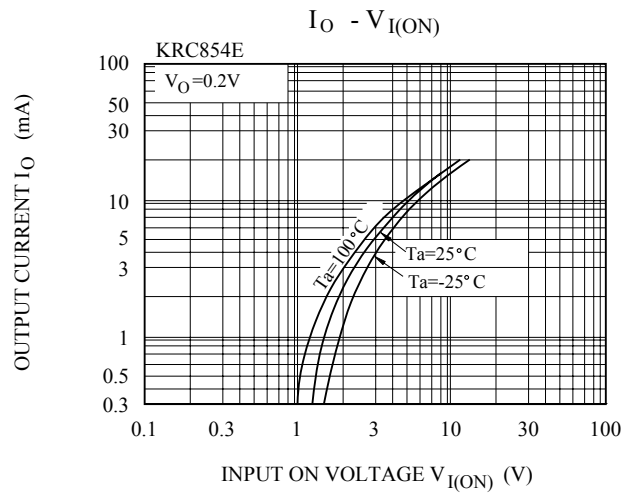
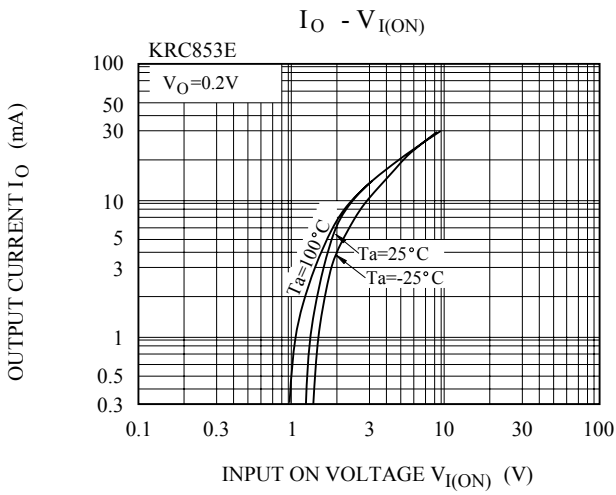
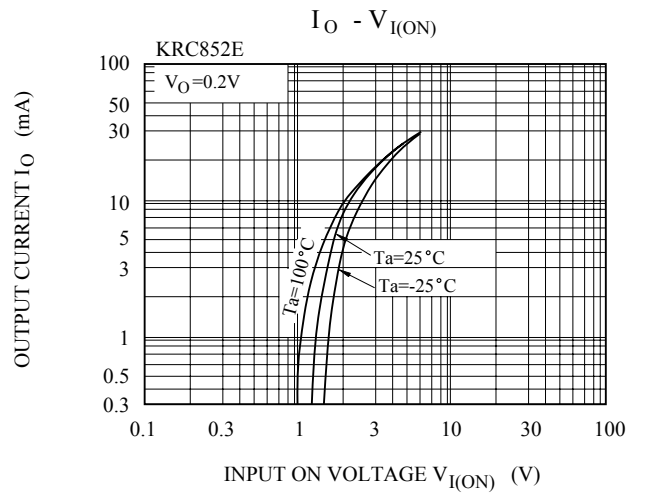
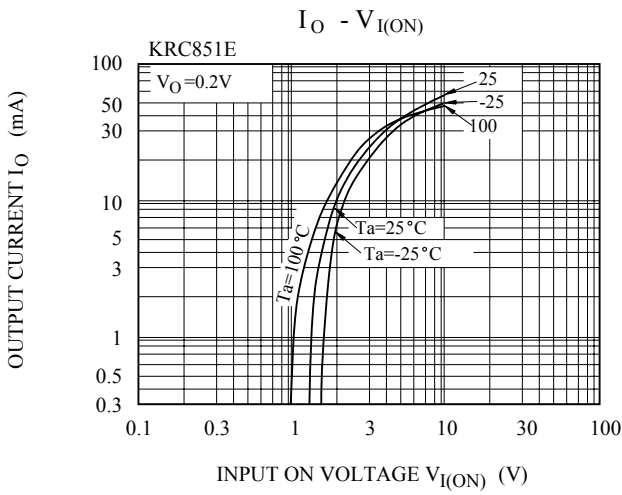
Note : \* Characteristic of Transistor Only.

# KRC851E~KRC856E

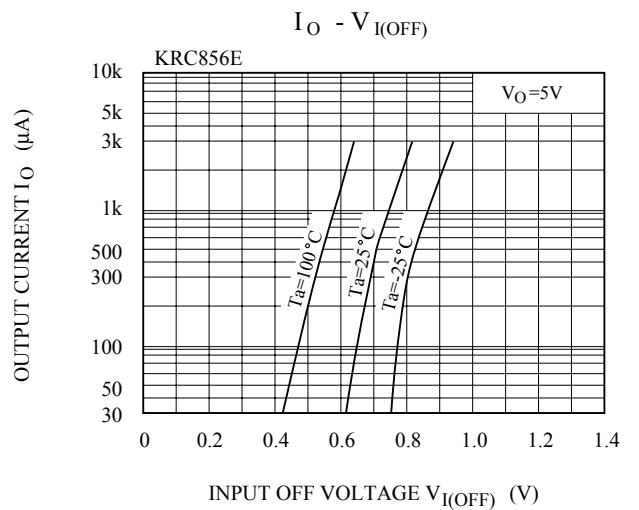
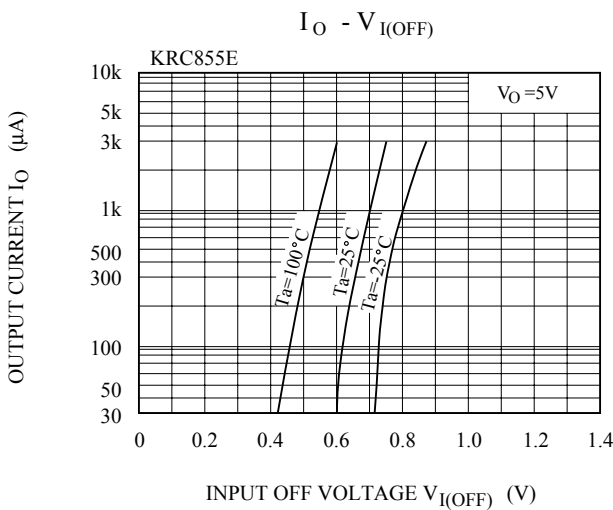
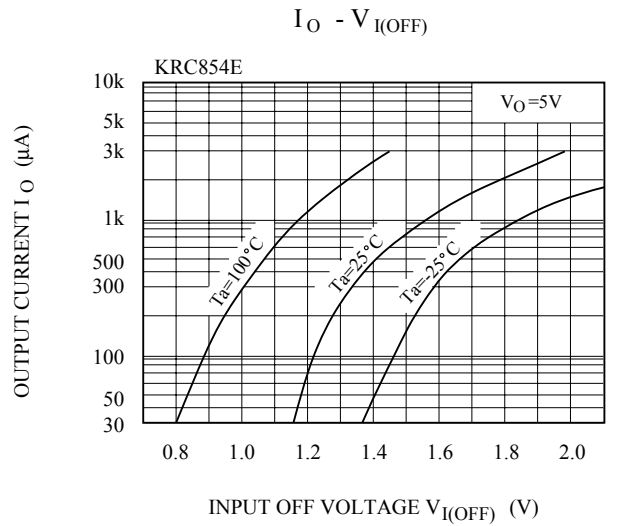
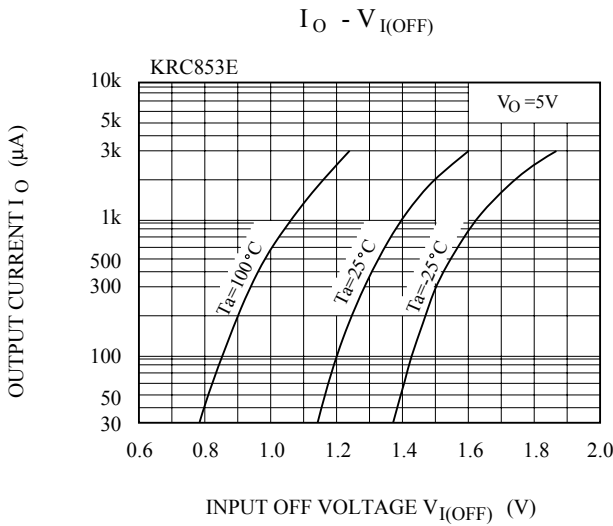
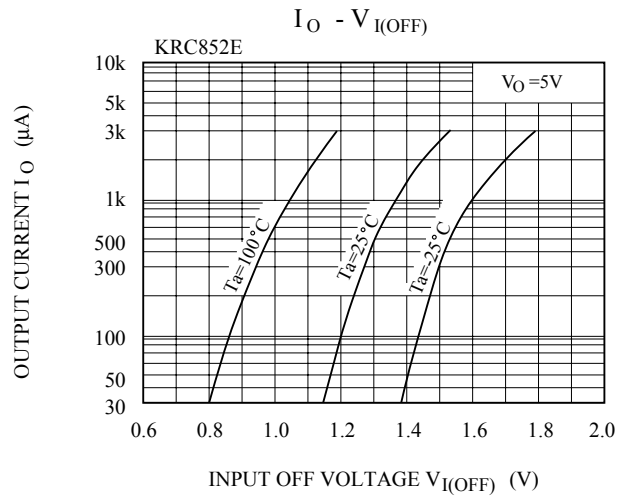
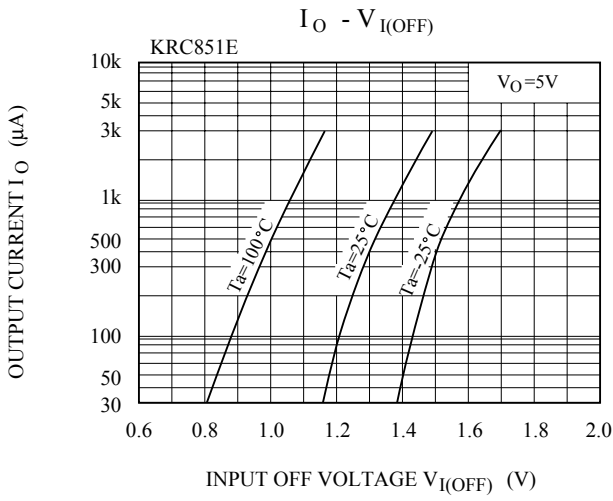
## ELECTRICAL CHARACTERISTICS (Ta=25°C)

CHARACTERISTIC		SYMBOL	TEST CONDITION	MIN.	TYP.	MAX.	UNIT
Switching Time	Rise Time	KRC851E	V <sub>O</sub> =5V V <sub>IN</sub> =5V R <sub>L</sub> =1kΩ	-	0.03	-	μS
		KRC852E		-	0.05	-	
		KRC853E		-	0.12	-	
		KRC854E		-	0.22	-	
		KRC855E		-	0.01	-	
		KRC856E		-	0.03	-	
	Storage Time	KRC851E		-	2.0	-	
		KRC852E		-	2.0	-	
		KRC853E		-	2.0	-	
		KRC854E		-	2.0	-	
		KRC855E		-	2.0	-	
		KRC856E		-	2.0	-	
	Fall Time	KRC851E		-	0.12	-	
		KRC852E		-	0.36	-	
		KRC853E		-	0.35	-	
		KRC854E		-	0.6	-	
		KRC855E		-	0.1	-	
		KRC856E		-	0.19	-	

# KRC851E~KRC856E



# KRC851E~KRC856E



# KRC851E~KRC856E

