

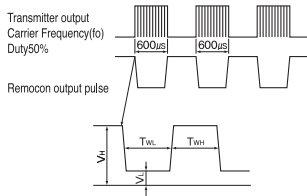


**Optic receiver modules**

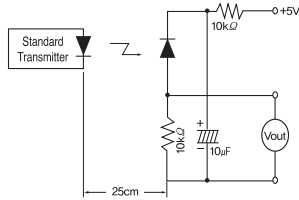
**KSM - 60 \*\*\* LF · KSM - 70 \*\*\* LF**

**MEASURING METHOD**

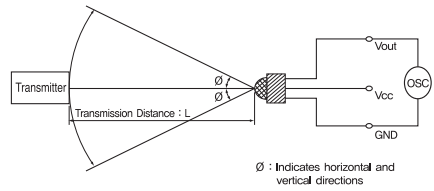
**Output Pulse Width**



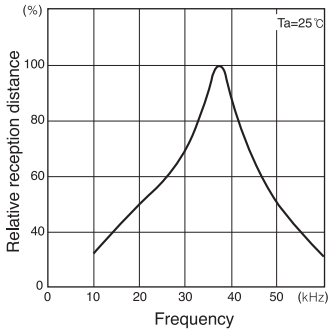
**Standard Transmitter**



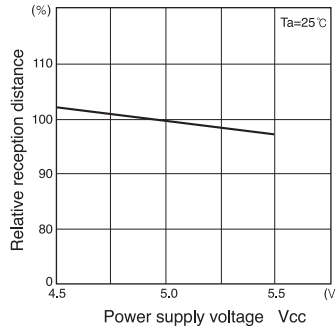
**Test Condition of Transmission Distance**



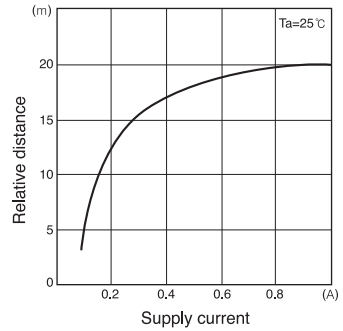
**Relative reception distance Vs. Frequency(37.9kHz)**



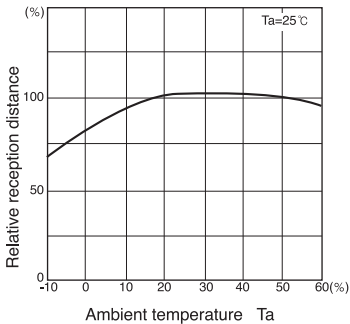
**Relative reception distance Vs. Power supply voltage**



**Relative distance Vs. Supply current**



**Relative reception distance Vs. Ambient temperature**



**Radiant pattern**

