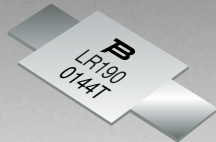


*ROHS COMPLIANT



BOURNS®

Features

- Axial leaded
- Fully compatible with current industry standards
- Weldable nickel terminals
- Very low internal resistance
- Operating currents to 9.0 Amps
- RoHS compliant*, lead free

■ Agency recognition:

Applications

- Any application that requires protection at low resistances
- Rechargeable battery packs
- Cellular phones
- Laptop computers

MF-LR Series - PTC Resettable Fuses

Electrical Characteristics

Model	V max. Volts	I max. Amps	I_{hold}		I_{trip}		Initial Resistance		1 Hour (R_1) Post-Trip Resistance		Max. Time To Trip		Tripped Power Dissipation
			Amperes At 23 °C		Ohms At 23 °C		Ohms At 23 °C		Amperes At 23 °C	Seconds At 23 °C	Watts At 23 °C		
			Hold	Trip	Min.	Max.	Max.			Typ.			
MF-LR190	15	100	1.90	3.90	0.039	0.072	0.102	9.5	5.0	1.2			
MF-LR190S	15	100	1.90	3.90	0.039	0.072	0.102	9.5	5.0	1.2			
MF-LR260	15	100	2.60	5.80	0.020	0.042	0.063	13.0	5.0	1.3			
MF-LR260S	15	100	2.60	5.80	0.020	0.042	0.063	13.0	5.0	2.5			
MF-LR380	15	100	3.80	8.30	0.013	0.026	0.037	19.0	5.0	2.5			
MF-LR450	20	100	4.50	8.90	0.011	0.020	0.028	22.5	5.0	1.4			
MF-LR550	20	100	5.50	10.50	0.009	0.019	0.022	27.5	5.0	1.4			
MF-LR600	10	100	6.00	11.70	0.007	0.014	0.016	30.0	5.0	2.8			
MF-LR730	10	100	7.30	14.10	0.006	0.012	0.015	30.0	5.0	3.0			
MF-LR730/20*	20	100	7.30	14.10	0.006	0.012	0.015	30.0	5.0	3.0			
MF-LR900/20*	20	100	9.00	16.70	0.006	0.010	0.014	45.0	5.0	3.0			

* TÜV recognition pending.

Environmental Characteristics

Operating/Storage Temperature-40 °C to +85 °C
 Maximum Device Surface Temperature
 in Tripped State125 °C
 Passive Aging.....+70 °C, 1000 hours±10 % typical resistance change
 Humidity Aging.....+85 °C, 85 % R.H. 7 days±10 % typical resistance change
 VibrationMIL-STD-883C, Condition ANo change

Test Procedures And Requirements For Model MF-LR Series

Test	Test Conditions	Accept/Reject Criteria
Visual/Mech.	Verify dimensions and materials.....	Per MF physical description
Resistance	In still air @ 23 °C	$R_{min} \leq R \leq R_{1max}$
Time to Trip	At specified current, V_{max} , 23 °C	$T \leq \text{max. time to trip (seconds)}$
Hold Current	30 min. at I_{hold}	No trip
Trip Cycle Life	V_{max} , I_{max} , 100 cycles	No arcing or burning
Trip Endurance.....	V_{max} , 48 hours	No arcing or burning

UL File NumberE 174545S
 CSA File Number.....CA 110338
 TÜV File NumberR2057213

Thermal Derating Chart - I_{hold} (Amps)

Model	Ambient Operating Temperature								
	-40 °C	-20 °C	0 °C	23 °C	40 °C	50 °C	60 °C	70 °C	85 °C
MF-LR190	2.8	2.5	2.3	1.9	1.6	1.5	1.4	1.2	1.0
MF-LR190S	2.8	2.5	2.3	1.9	1.6	1.5	1.4	1.2	1.0
MF-LR260	3.8	3.4	3.1	2.6	2.2	2.0	1.9	1.7	1.4
MF-LR260S	3.8	3.4	3.1	2.6	2.2	2.0	1.9	1.7	1.4
MF-LR380	5.5	4.9	4.4	3.8	3.3	3.0	2.8	2.5	2.1
MF-LR450	6.5	5.8	5.3	4.5	3.9	3.6	3.3	2.9	2.5
MF-LR550	8.0	7.1	6.2	5.5	4.7	4.3	4.0	3.6	3.0
MF-LR600	8.7	7.8	7.1	6.0	5.2	4.7	4.4	3.9	3.3
MF-LR730	10.5	9.5	8.6	7.3	7.4	6.8	6.2	5.5	4.5
MF-LR730/20	10.5	9.5	8.6	7.3	7.4	6.8	6.2	5.5	4.5
MF-LR900/20	12.7	11.4	10.0	9.0	7.5	6.8	6.2	5.5	4.5

* I_{trip} is approximately two times I_{hold} .

*RoHS Directive 2002/95/EC Jan 27 2003 including Annex Specifications are subject to change without notice. Customers should verify actual device performance in their specific applications.

MF-LR Series - PTC Resettable Fuses

BOURNS®

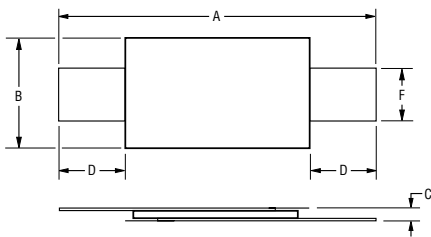
Product Dimensions

Model	A		B		C		D		F		Pkg. Style
	Min.	Max.	Min.	Max.	Min.	Max.	Min.	Max.	Min.	Max.	
MF-LR190	19.9 (0.783)	22.1 (0.870)	4.9 (0.193)	5.2 (0.205)	0.6 (0.024)	1.0 (0.039)	5.5 (0.217)	7.5 (0.295)	3.9 (0.154)	4.1 (0.161)	Std.
MF-LR190S	19.9 (0.783)	22.1 (0.870)	4.9 (0.193)	5.2 (0.205)	0.6 (0.024)	1.0 (0.039)	5.5 (0.217)	7.5 (0.295)	3.9 (0.154)	4.1 (0.161)	S
MF-LR260	20.9 (0.823)	23.1 (0.909)	4.9 (0.193)	5.2 (0.205)	0.6 (0.024)	1.0 (0.039)	4.1 (0.161)	5.5 (0.217)	3.9 (0.154)	4.1 (0.161)	Std.
MF-LR260S	20.9 (0.823)	23.1 (0.909)	4.9 (0.193)	5.2 (0.205)	0.6 (0.024)	1.0 (0.039)	4.1 (0.161)	5.5 (0.217)	3.9 (0.154)	4.1 (0.161)	S
MF-LR380	24.0 (0.945)	26.0 (1.024)	6.9 (0.272)	7.5 (0.295)	0.6 (0.024)	1.0 (0.039)	4.1 (0.161)	5.5 (0.217)	4.9 (0.193)	5.1 (0.201)	Std.
MF-LR450	24.0 (0.945)	26.0 (1.024)	9.9 (0.390)	10.5 (0.414)	0.6 (0.024)	1.0 (0.039)	5.3 (0.209)	6.7 (0.264)	5.9 (0.232)	6.1 (0.240)	Std.
MF-LR550	35.0 (1.378)	37.0 (1.457)	6.9 (0.272)	7.5 (0.295)	0.6 (0.024)	1.0 (0.039)	5.3 (0.209)	6.7 (0.264)	4.9 (0.193)	5.1 (0.201)	Std.
MF-LR600	24.0 (0.945)	26.0 (1.024)	13.9 (0.547)	14.5 (0.571)	0.6 (0.024)	1.0 (0.039)	4.1 (0.161)	5.5 (0.217)	5.9 (0.232)	6.1 (0.240)	Std.
MF-LR730	27.1 (1.067)	29.1 (1.146)	13.9 (0.547)	14.5 (0.571)	0.6 (0.024)	1.0 (0.039)	4.1 (0.161)	5.5 (0.217)	5.9 (0.232)	6.1 (0.240)	Std.
MF-LR730/20	27.1 (1.067)	29.1 (1.146)	13.9 (0.547)	14.5 (0.571)	0.6 (0.024)	1.0 (0.039)	4.1 (0.161)	5.5 (0.217)	5.9 (0.232)	6.1 (0.240)	Std.
MF-LR900/20	45.4 (1.787)	47.6 (1.874)	7.9 (0.311)	8.5 (0.335)	0.6 (0.024)	1.3 (0.051)	4.6 (0.181)	9.2 (0.362)	5.9 (0.232)	6.1 (0.240)	Std.

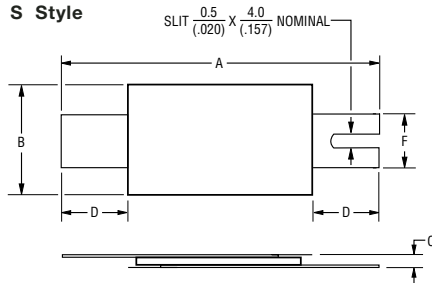
Packaging: Bulk - 500 pcs. per bag. Tape and Reel - Consult factory.

DIMENSIONS = $\frac{\text{MM}}{\text{(INCHES)}}$

Standard Style

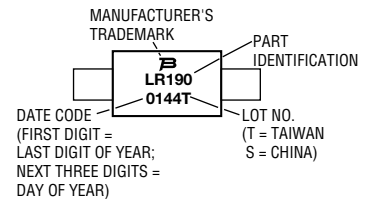


S Style



Typical Part Marking

Represents total content. Layout may vary.

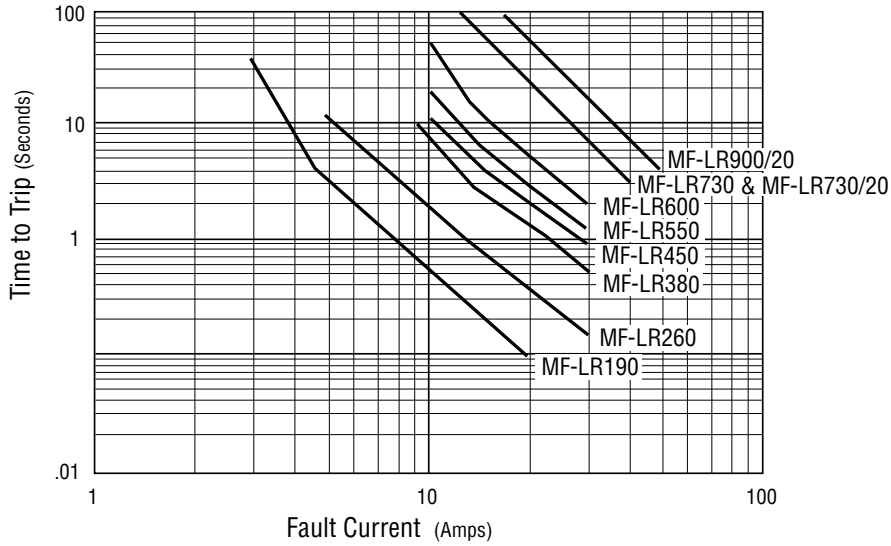


Specifications are subject to change without notice. Customers should verify actual device performance in their specific applications.

MF-LR Series - PTC Resettable Fuses

BOURNS®

Typical Time to Trip at 23 °C



How To Order

MF - LR 730/20 S - 0

Multifuse® Product Designator _____
 Series _____
 LR = Axial Leaded "Strap" Component
 Hold Current, I_{hold}/V_{max}* _____
 190-900 (1.90 Amps - 9.00 Amps)
 Lead Option** _____
 S = Slotted Lead Option
 Packaging Options _____
 - _ = Bulk Packaging Designator for Models MF-LR190 through MF-LR730
 - 0 = Bulk Packaging Designator for Models MF-LR730/20 and MF-LR900/20
 - 2 = Tape and Reel***

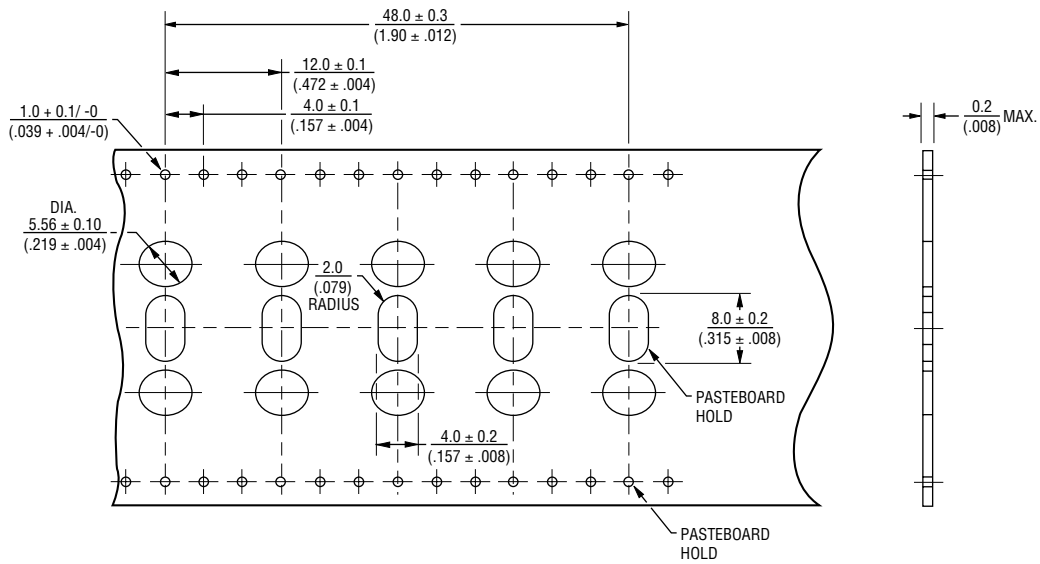
*V_{max} entry applies only to Models MF-LR730/20 & MF-LR900/20.

**Slotted Lead Option applies only to Models MF-LR190 & MF-LR260.

***Packaged per EIA 486-B

MF-S, MF-LS, MF-LR and MF-VS Series Tape and Reel Specifications **BOURNS®**

Taped Component Dimensions



Reel Dimensions

