

Monolithic crystal filter

MQF9.0-0500/04

(preliminary specification)



Application

- 8 pol filter
- i.f.- filter
- use in mobile and stationary transceivers

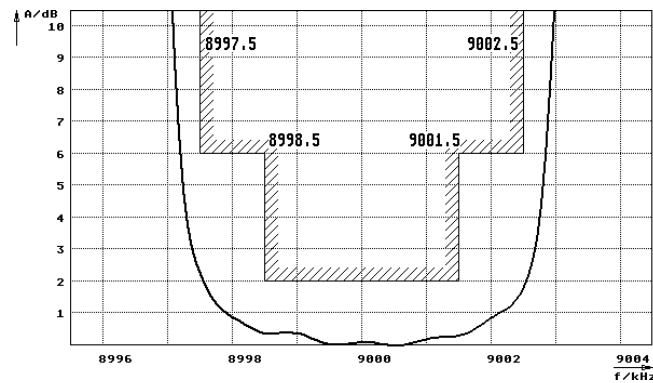
Limiting values

		Unit	Value
Center frequency	f_0	MHz	9.0
Insertion loss		dB	≤ 4.0
Pass band at 6.0 dB		kHz	$\pm \geq 2.50$
Ripple in pass band	$f_0 \pm 1.50$ kHz	dB	≤ 2.0
Stop band attenuation	$f_0 \pm 5.1$ kHz	dB	≥ 60
	$f_0 \pm 6.5$ kHz	dB	> 80
Shape factor	60:6		1.8
	80:6		2.2
Alternate attenuation		dB	> 90
Terminating impedance Z			
R1 C1		Ohm/pF	500 30
R2 C2		Ohm/pF	500 30

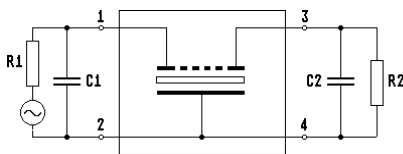
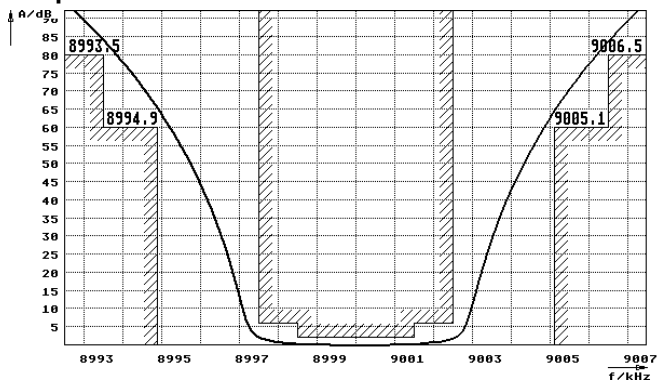
Operating temp. range $^{\circ}\text{C}$ -20... +70

Characteristics MQF9.0-0500/04

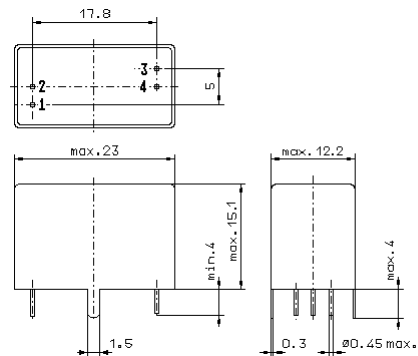
Pass band



Stop band



- Pin connections:
- 1 Input
 - 2 Ground-Input
 - 3 Output
 - 4 Ground-Output



GV6.2