

5.0" 5x8 Dot Matrix Display

FEATURES

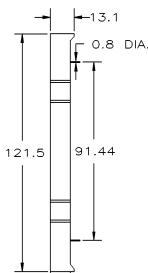
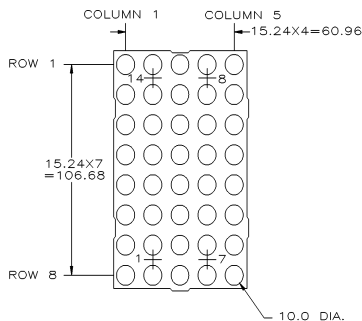
- 5.0" 5x8 dot matrix
- Additional colors/materials available

OPTO-ELECTRICAL CHARACTERISTICS (Ta = 25°C)

PART NO.	PEAK WAVE LENGTH (nm)	EMITTED COLOR	FACE COLORS		MAXIMUM RATINGS			OPTO-ELECTRICAL CHARACTERISTICS						PIN-OUT	
			SURFACE COLOR	EPOXY COLOR	IF (mA)	VR (V)	PD (mW)	VF(V)			IR(μA)		IV(μcd)		
								typ.	max.	@mA	max.	@VR	typ. per dot		@mA
MTAN2146-AG	567	Green	Grey	White	30	5	85	4.2	6.0	20	100	5	6800	10	1
MTAN4146-AO	635	Orange	Grey	White	30	5	85	4.2	6.0	20	100	5	7800	10	1
MTAN4146-AHR	635	Hi-Eff Red	Red	Red	30	5	85	4.2	6.0	20	100	5	7800	10	1
MTAN7146M-12A	660	Ultra Red	Black	White	30	4	70	3.4	4.4	20	100	4	41100	20	1
MTAN2146-CG	567	Green	Grey	White	30	5	85	4.2	6.0	20	100	5	6800	10	2
MTAN4146-CO	635	Orange	Grey	White	30	5	85	4.2	6.0	20	100	5	7800	10	2
MTAN4146-CHR	635	Hi-Eff Red	Red	Red	30	5	85	4.2	6.0	20	100	5	7800	10	2
MTAN7146M-22C	660	Ultra Red	Black	White	30	4	70	3.4	4.4	20	100	4	41100	20	2

Operating Temperature: -25~+85, Storage Temperature: -25~+100. Other face/epoxy colors are available.

PACKAGE DIMENSIONS AND PIN FUNCTIONS



PINOUT 1

COLUMN ANODE

PIN NO. FUNCTION

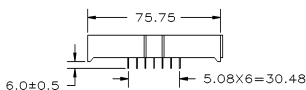
1. CATHODE ROW 6
2. ANODE COLUMN 1
3. CATHODE ROW 8
4. CATHODE ROW 5
5. ANODE COLUMN 3
6. CATHODE ROW 4
7. CATHODE ROW 7
8. ANODE COLUMN 4
9. ANODE COLUMN 5
10. ANODE COLUMN 3
11. ANODE COLUMN 2
12. CATHODE ROW 1
13. CATHODE ROW 2
14. CATHODE ROW 3

PINOUT 2

COLUMN CATHODE

PIN NO. FUNCTION

1. ANODE ROW 6
2. CATHODE COLUMN 1
3. ANODE ROW 8
4. ANODE ROW 5
5. CATHODE COLUMN 3
6. ANODE ROW 4
7. ANODE ROW 7
8. CATHODE COLUMN 4
9. CATHODE COLUMN 5
10. CATHODE COLUMN 3
11. CATHODE COLUMN 2
12. ANODE ROW 1
13. ANODE ROW 2
14. ANODE ROW 3



1. ALL DIMENSIONS ARE IN mm, TOLERANCE IS ±0.25mm UNLESS OTHERWISE SPECIFIED.
2. THE SLOPE ANGLE OF ANY PIN MAY BE ±5.0° MAX.



120 Broadway • Menands, New York 12204

Toll Free: (800) 98-4LEDS • Fax: (518) 432-7454

For up-to-date product info visit our web site at www.marktechopto.com

All specifications subject to change.