

Small Sized Quartz Crystal Oscillator

■GENERAL DESCRIPTION

The NJU6366 series is a C-MOS fundamental quartz crystal oscillator that consists of an oscillation amplifier, 3-stage divider and 3-state output buffer.

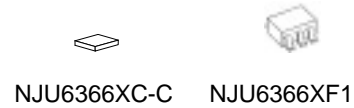
The 3-stage divider generates only one frequency selected of $f_0, f_0/2, f_0/4$ and $f_0/8$ by internal circuits is output.

The oscillation amplifier is realized very low stand-by current using NAND circuit.

The 3-state output buffer is C-MOS compatible

Furthermore, the package is small-sized MTP-6.

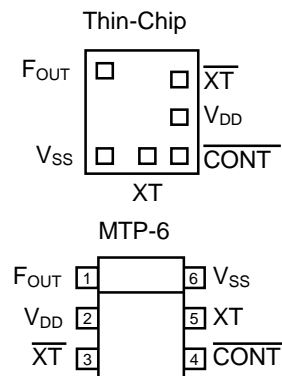
■PACKAGE OUTLINE



■FEATURES

- Operating Voltage 2.0 to 5.5V
- Maximum Oscillation Frequency 50MHz
- Low Operating Current
- High Fan-out $I_{OH}/I_{OL}=4mA @ 2.5V$
- 3-Stage Divider One of $f_0, f_0/2, f_0/4$ and $f_0/8$
- Oscillation Stop and Output Stand-by Function
- 3-State Output Buffer
- Oscillation Capacitors C_g and C_d on-chip
- Package Outline Thin-Chip/MTP-6
- C-MOS Technology

■PAD LOCATION/PIN CONFIGURATION



■LINE-UP TABLE

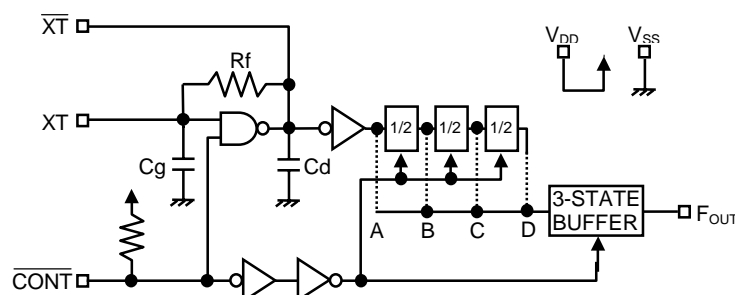
Type No.	F_{OUT}	Internal Connect		C_g/C_d
		Connect	Non Connect	
NJU6366	A f_0	A Line	B,C,D Line	23/23pF
	B $f_0/2$	B Line	A,C,D Line	23/23pF
	C $f_0/4$	C Line	A,B,D Line	23/23pF
	D $f_0/8$	D Line	A,B,C Line	23/23pF

■COORDINATES

Pad Name	X	Y
F_{OUT}	-207	247
V_{SS}	-207	-247
XT	33	-247
\overline{CONT}	207	-247
V_{DD}	207	-17
\overline{XT}	207	172

Starting Point: Chip Center Unit[um]
 Chip Size: 0.67x0.75mm
 Thin-Chip Thickness(-C): 260±20um
 Pad Size: 90x90um

■BLOCK DIAGRAM



■TERMINAL DESCRIPTION

SYMBOL	FUNCTION
	Oscillation and 3-state Output Buffer Control
$\overline{\text{CONT}}$	$\overline{\text{CONT}}$ F_{OUT}
	H or OPEN Output either one frequency selected of f_0 , $f_0/2$, $f_0/4$ and $f_0/8$ Note1)
	L Oscillation Stop and High impedance Output
$\overline{\text{XT}}$	Quartz Crystal Connecting Terminals
$\overline{\text{XT}}$	
V_{SS}	$V_{\text{SS}}=0\text{V}$
F_{OUT}	Frequency Output
V_{DD}	$V_{\text{DD}}=2.5\text{V}/3.0\text{V}/5.0\text{V}$

Note1) Refer to the line-up table.

■ABSOLUTE MAXIMUM RATINGS

(Ta=25°C)

PARAMETER	SYMBOL	RATING	UNIT
Supply Voltage	V_{DD}	-0.5~+7.0	V
Input Voltage	V_{IN}	$V_{\text{SS}}-0.5\sim V_{\text{DD}}+0.5$	V
Output Voltage	V_{O}	-0.5~ $V_{\text{DD}}+0.5$	V
Input Current	I_{IN}	±10	mA
Output Current	I_{O}	±25	mA
Power Dissipation Note4)	P_{D}	200(MTP-6)	mW
Operating Temperature Range	T_{opr}	-40~+85	°C
Storage Temperature Range	T_{stg}	-55~+125	°C

Note2) If the supply voltage(V_{DD}) is less than 7.0V, the input voltage must not over the V_{DD} level though 7.0V is limit specified.

Note3) Decoupling capacitor should be connected between V_{DD} and V_{SS} due to the stabilized operation for the circuit.

Note4) The power dissipation is the maximum value at only the package.

NJU6366 Series

■ELECTRICAL CHARACTERISTICS

(Ta=25°C)

PARAMETER	SYMBOL	CONDITIONS	MIN	TYP	MAX	UNIT
Operating Voltage	V _{DD}		2.0		5.5	V

(V_{DD}=2.5V, Ta=25°C)

PARAMETER	SYMBOL	CONDITIONS	MIN	TYP	MAX	UNIT
Operating Current	I _{DD}	A version, fosc=16MHz, C _L =15pF			5	mA
		B version, fosc=16MHz, C _L =15pF			4	
		C version, fosc=16MHz, C _L =15pF			3	
		D version, fosc=16MHz, C _L =15pF			3	
Oscillation Stopping Current	I _{STB}	$\overline{\text{CONT}} = V_{SS}$, No load		2	5	uA
Stand-by Current	I _{st}	$\overline{\text{CONT}} = \text{XT} = V_{SS}$, No load Note5)			1	uA
Input Voltage	V _{IH}		2.0		2.5	V
	V _{IL}		0		0.5	V
Output Current	I _{OH}	V _{OH} =2.2V	4			mA
	I _{OL}	V _{OL} =0.3V	4			mA
Input Current	I _{IN}	$\overline{\text{CONT}} = 0.8V_{DD}$		7.5	12.0	uA
		$\overline{\text{CONT}} = 0.2V_{DD}$		1.2	2.0	uA
3-state Off Leakage Current	I _{OZ}	$\overline{\text{CONT}} = V_{SS}$, F _{OUT} = V _{DD} or V _{SS}			±0.1	uA
Feedback Resistance	R _f			227		kΩ
Internal Capacitor	C _g /C _d	fosc=16MHz		23/23		pF
Maximum Oscillation Frequency	F _{MAX}		50			MHz
Output Signal Symmetry	SYM	C _L =15pF, @V _{DD} /2	45	50	55	%
		C _L =30pF, @V _{DD} /2	45	50	55	
Output Signal Rise Time	tr	C _L =15pF, 10%~90%		3	6	ns
		C _L =30pF, 10%~90%		3	6	
Output Signal Fall Time	tf	C _L =15pF, 90%~10%		3	6	ns
		C _L =30pF, 90%~10%		3	6	
Output Disable time	T _{PLZ}	C _L =15pF, R _{UP} =10kΩ			250	ns
Output Enable Time	T _{PZL}	C _L =15pF, R _{UP} =10kΩ			250	ns

Note5) Excluding input current on $\overline{\text{CONT}}$ Terminal.

NJU6366 Series

($V_{DD}=3.0V, T_a=25^{\circ}C$)

PARAMETER	SYMBOL	CONDITIONS	MIN	TYP	MAX	UNIT
Operating Current	I_{DD}	A version, $f_{osc}=16MHz, C_L=15pF$			6	mA
		B version, $f_{osc}=16MHz, C_L=15pF$			5	
		C version, $f_{osc}=16MHz, C_L=15pF$			4	
		D version, $f_{osc}=16MHz, C_L=15pF$			4	
Oscillation Stopping Current	I_{STB}	$\overline{CONT} = V_{SS}$, No load		2	5	uA
Stand-by Current	I_{st}	$\overline{CONT} = XT = V_{SS}$, No load Note5)			1	uA
Input Voltage	V_{IH}		2.4		3.0	V
	V_{IL}		0		0.6	V
Output Current	I_{OH}	$V_{OH}=2.7V$	5			mA
	I_{OL}	$V_{OL}=0.3V$	5			mA
Input Current	I_{IN}	$\overline{CONT} = 0.8V_{DD}$		10.0	15.0	uA
		$\overline{CONT} = 0.2V_{DD}$		1.8	3.0	uA
3-state Off Leakage Current	I_{OZ}	$\overline{CONT} = V_{SS}$, $F_{OUT} = V_{DD}$ or V_{SS}			± 0.1	uA
Feedback Resistance	R_f			227		k Ω
Internal Capacitor	C_g/C_d	$f_{osc}=16MHz$		23/23		pF
Maximum Oscillation Frequency	F_{MAX}		50			MHz
Output Signal Symmetry	SYM	$C_L=15pF, @V_{DD}/2$	45	50	55	%
		$C_L=30pF, @V_{DD}/2$	45	50	55	
Output Signal Rise Time	t_r	$C_L=15pF, 10\% \sim 90\%$		3	6	ns
		$C_L=30pF, 10\% \sim 90\%$		3	6	
Output Signal Fall Time	t_f	$C_L=15pF, 90\% \sim 10\%$		3	6	ns
		$C_L=30pF, 90\% \sim 10\%$		3	6	
Output Disable time	T_{PLZ}	$C_L=15pF, R_{UP}=10k\Omega$			200	ns
Output Enable Time	T_{PZL}	$C_L=15pF, R_{UP}=10k\Omega$			200	ns

Note5) Excluding input current on \overline{CONT} Terminal.

NJU6366 Series

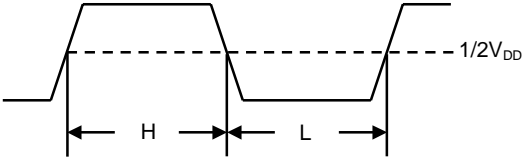
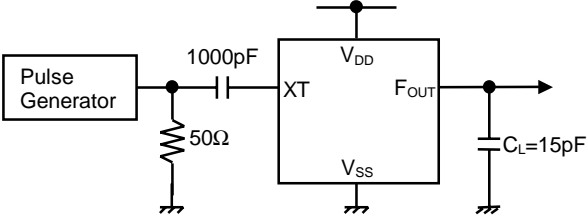
($V_{DD}=5.0V, T_a=25^{\circ}C$)

PARAMETER	SYMBOL	CONDITIONS	MIN	TYP	MAX	UNIT
Operating Current	I_{DD}	A version, $f_{osc}=16MHz, C_L=15pF$			10	mA
		B version, $f_{osc}=16MHz, C_L=15pF$			9	
		C version, $f_{osc}=16MHz, C_L=15pF$			9	
		D version, $f_{osc}=16MHz, C_L=15pF$			8	
Oscillation Stopping Current	I_{STB}	$\overline{CONT} = V_{SS}$, No load		5	10	μA
Stand-by Current	I_{st}	$\overline{CONT} = XT = V_{SS}$, No load Note5)			1	μA
Input Voltage	V_{IH}		3.5		5.0	V
	V_{IL}		0		1.5	V
Output Current	I_{OH}	$V_{OH}=4.5V$	8			mA
	I_{OL}	$V_{OL}=0.5V$	8			mA
Input Current	I_{IN}	$\overline{CONT} = 0.8V_{DD}$		27.0	40.0	μA
		$\overline{CONT} = 0.2V_{DD}$		5.5	8.0	μA
3-state Off Leakage Current	I_{OZ}	$\overline{CONT} = V_{SS}$, $F_{OUT} = V_{DD}$ or V_{SS}			± 0.1	μA
Feedback Resistance	R_f			227		k Ω
Internal Capacitor	C_g/C_d	$f_{osc}=16MHz$		23/23		pF
Maximum Oscillation Frequency	F_{MAX}		50			MHz
Output Signal Symmetry	SYM	$C_L=15pF, @V_{DD}/2$	45	50	55	%
		$C_L=30pF, @V_{DD}/2$	45	50	55	
Output Signal Rise Time	t_r	$C_L=15pF, 10\% \sim 90\%$		3	6	ns
		$C_L=30pF, 10\% \sim 90\%$		3	6	
Output Signal Fall Time	t_f	$C_L=15pF, 90\% \sim 10\%$		3	6	ns
		$C_L=30pF, 90\% \sim 10\%$		3	6	
Output Disable time	T_{PLZ}	$C_L=15pF, R_{UP}=10k\Omega$			100	ns
Output Enable Time	T_{PZL}	$C_L=15pF, R_{UP}=10k\Omega$			100	ns

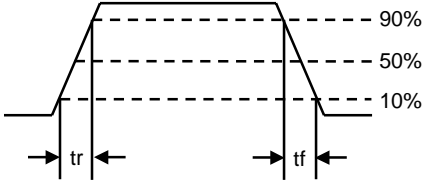
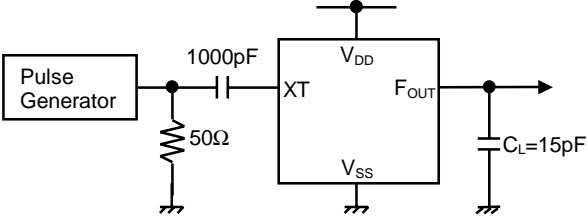
Note5) Excluding input current on \overline{CONT} Terminal.

■ MEASUREMENT CIRCUITS

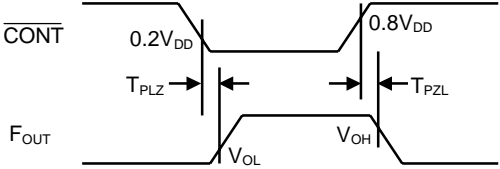
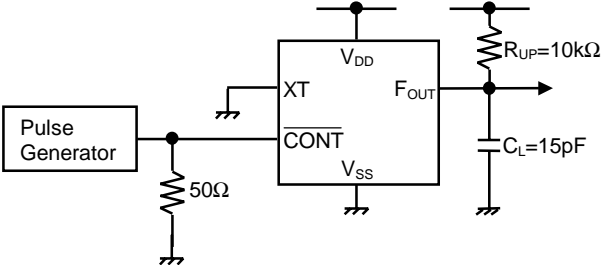
(1) Output Signal Symmetry ($C_L=15\text{pF}$)



(2) Output Signal Rise/Fall Time ($C_L=15\text{pF}$)



(3) Output Disable/Enable Time ($C_L=15\text{pF}, R_{UP}=10\text{k}\Omega$)



[CAUTION]
 The specifications on this data book are only given for information, without any guarantee as regards either mistakes or omissions. The application circuits in this data book are described only to show representative usages of the product and not intended for the guarantee or permission of any right including the industrial rights.