

# Crystal filter

## QF 1.4-L0200/05



### Application

- 6 pol filter
- i.f.- filter
- use in mobile and stationary transceivers

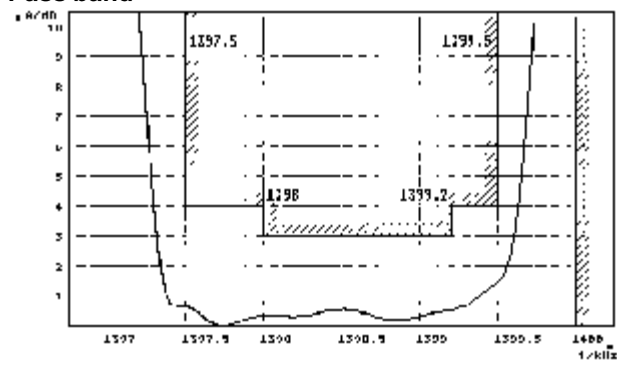
Limiting values		Unit	Value
Center frequency	$f_0$	MHz	1.4
Insertion loss		dB	$\leq 5.0$
Pass band at 4.0 dB		kHz	-2.5...-0.5
Ripple in pass band	$f_0 - 0.8 \dots - 2$ kHz	dB	$\leq 3.0$
Stop band attenuation	$f_0$	dB	$\geq 10$
	$f_0 - 5$ kHz; $f_0 + 0.7$ kHz	dB	$> 45$
Alternate attenuation		dB	$> 45$ except spurious

Terminating impedance Z			
R1    C1		Ohm/pF	1000    75
R2    C2		Ohm/pF	1000    75

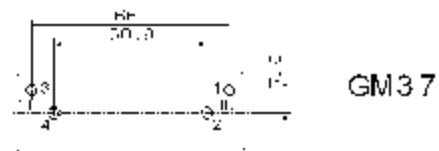
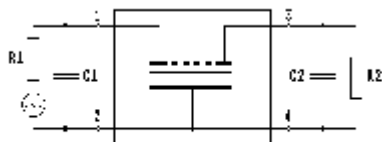
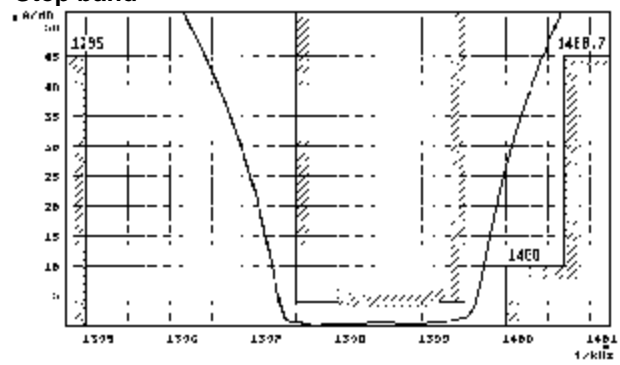
Operating temp. range		°C	-10... +65
-----------------------	--	----	------------

### Characteristics QF 1.4-L0200/05

#### Pass band



#### Stop band



- Pin connections:
- 1 Input
  - 2 Ground-Input
  - 3 Output
  - 4 Ground-Output