

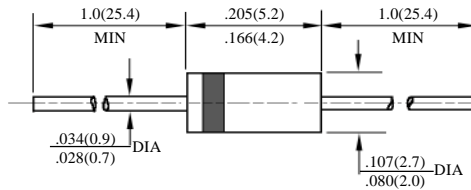
SF11 – SF16

超快速二极管
SUPER FAST DIODES

| 型号 TYPE | 最大反向 峰值电压 Maximum Peak Reverse Voltage | 最大平均 正向电流 Maximum Average Rectified Current @ Half-Wave Resistive Load 60Hz | | 最大正向 浪涌电流 Maximum Forward Peak Surge Current @ 8.3ms Superimposed | 最大反向 漏电流 Maximum Reverse Current @ PRV @ T _A =25°C | 最大正向电压 Maximum Forward Voltage @ T _A =25°C | | 最大反向 恢复时间 Maximum Reverse Recovery Time | 外型尺寸 Package Dimensions |
|------------|---|--|----|--|--|---|-----------------|--|-------------------------------|
| | PRV | I _O @ T _L | °C | I _{FM} (Surge) | I _R | I _{FM} | V _{FM} | T _{rr} | |
| | V _{FK} | A _{AV} | | A _{PK} | μA _{dc} | A _{PK} | V _{PK} | ns | |
| SF11 | 50 | 1.0 | 55 | 30 | 5.0 | 1.0 | 0.95 | 35 | DO – 41 |
| SF12 | 100 | | | | | | 0.95 | | |
| SF13 | 150 | | | | | | 0.95 | | |
| SF14 | 200 | | | | | | 0.95 | | |
| SF15 | 300 | | | | | | 1.25 | | |
| SF16 | 400 | | | | | | 1.25 | | |

T_{rr}测试条件: I_F = 0.5A, I_R = 1.0A, I_{RR} = 0.25A

T_{rr} Test Conditions: I_F = 0.5A, I_R = 1.0A, I_{RR} = 0.25A



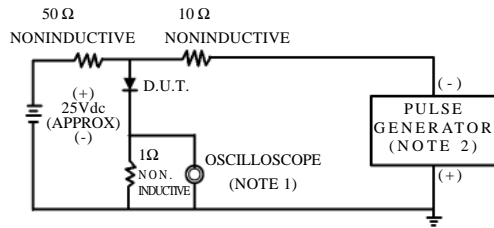
DO – 41

SF11-SF16

超快速二极管额定值与特性曲线

RATING AND CHARACTERISTIC CURVES OF SUPER FAST DIODES

FIG.1-TEST CIRCUIT DIAGRAM AND REVERSE RECOVERY TIME CHARACTERISTIC



NOTES: 1. Rise Time=7ns max.
Input Impedance=1megohm.22pF.
2. Rise Time=10ns max.
Source Impedance=50 ohms.

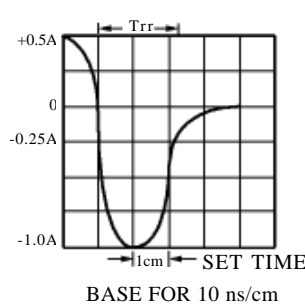


FIG. 2 - TYPICAL FORWARD CURRENT DERATING CURVE

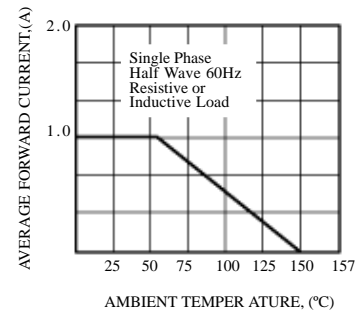


FIG. 3 - TYPICAL REVERSE CHARACTERISTICS

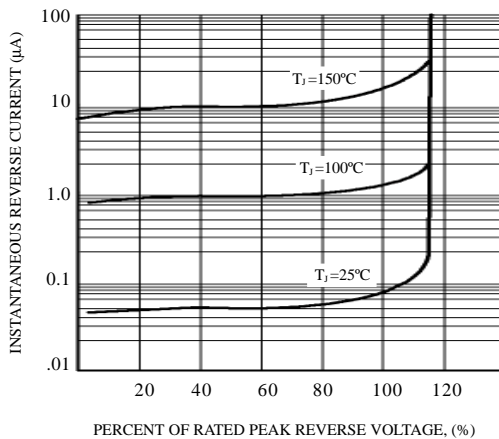


FIG. 4 - TYPICAL INSTANTANEOUS FORWARD CHARACTERISTICS

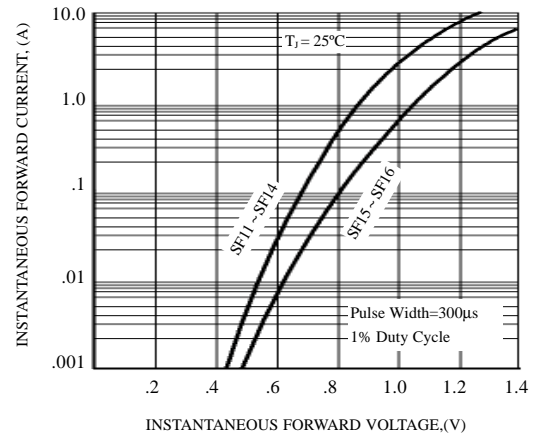


FIG. 5 - MAXIMUM NON-REPETITIVE FORWARD SURGE CURRENT

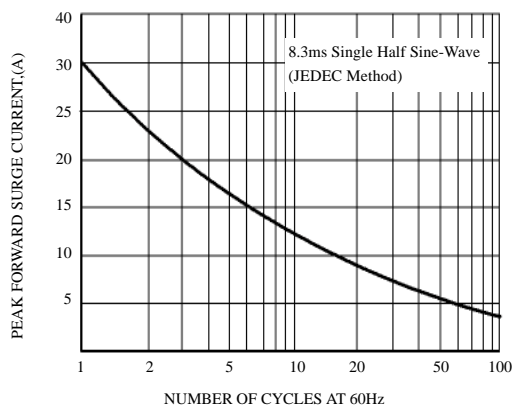


FIG. 6 - TYPICAL JUNCTION CAPACITANCE

