

# SF11 THRU SF18

# FMS

## 1.0 AMP SUPER FAST RECTIFIERS



### FEATURES

- \* Low forward voltage drop
- \* High current capability
- \* High reliability
- \* High surge current capability

### MECHANICAL DATA

- \* Case: Molded plastic
- \* Epoxy: UL 94V-0 rate flame retardant
- \* Lead: Axial leads, solderable per MIL-STD-202, method 208 guranteed
- \* Polarity: Color band denotes cathode end
- \* Mounting position: Any
- \* Weight: 0.34 grams

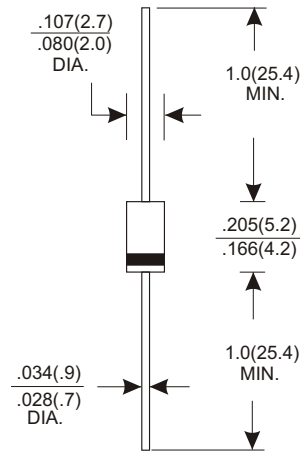
### VOLTAGE RANGE

50 to 600 Volts

### CURRENT

1.0 Ampere

DO-41



## MAXIMUM RATINGS AND ELECTRICAL CHARACTERISTICS

Rating 25°C ambient temperature unieess otherwies specified.  
Single phase half wave, 60Hz, resistive or inductive load.  
For capacitive load, derate current by 20%.

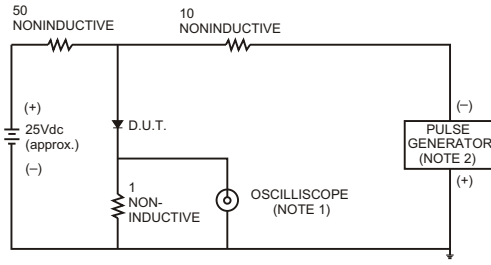
TYPE NUMBER	SF11	SF12	SF13	SF14	SF15	SF16	SF17	SF18	UNITS
Maximum Recurrent Peak Reverse Voltage	50	100	150	200	300	400	500	600	V
Maximum RMS Voltage	35	70	105	140	210	280	350	420	V
Maximum DC Blocking Voltage	50	100	150	200	300	400	500	600	V
Maximum Average Forward Rectified Current .375"(9.5mm) Lead Length at Ta=55°C	1.0								A
Peak Forward Surge Current, 8.3 ms single half sine-wave superimposed on rated load (JEDEC method)	30								A
Maximum Instantaneous Forward Voltage at 1.0A	0.95		1.25			1.50		V	
Maximum DC Reverse Current Ta=25°C	5.0								A
at Rated DC Blocking Voltage Ta=100°C	50								A
Maximum Reverse Recovery Time (Note 1)	35								nS
Typical Junction Capacitance (Note 2)	50								pF
Operating and Storage Temperature Range Tj, Tstg	-65 — +150								°C

#### NOTES:

- Reverse Recovery Time test condition: IF=0.5A, IR=1.0A, IRR=0.25A
- Measured at 1MHz and applied reverse voltage of 4.0V D.C.

## RATING AND CHARACTERISTIC CURVES (SF11 THRU SF18)

FIG.1- TEST CIRCUIT DIAGRAM AND REVERSE RECOVERY TIME CHARACTERISTIC



NOTES: 1. Rise Time= 7ns max., Input Impedance= 1 megohm.22pF.  
2. Rise Time= 10ns max., Source Impedance= 50 ohms.

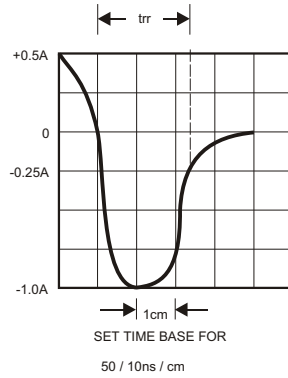


FIG.2-TYPICAL FORWARD CURRENT DERATING CURVE

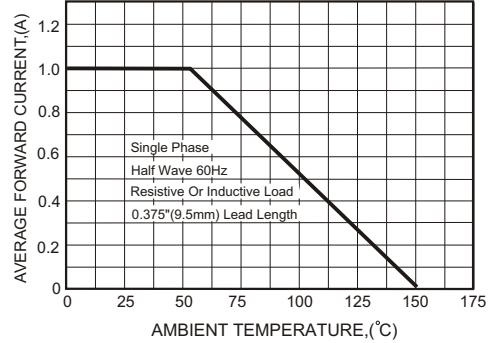


FIG.3-TYPICAL FORWARD CHARACTERISTICS

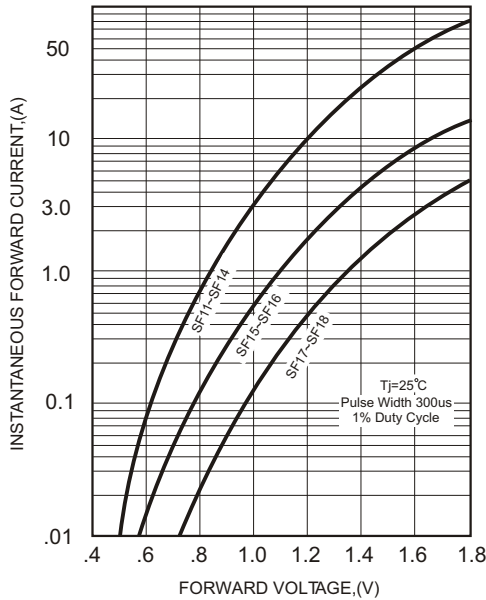


FIG.4-TYPICAL REVERSE CHARACTERISTICS

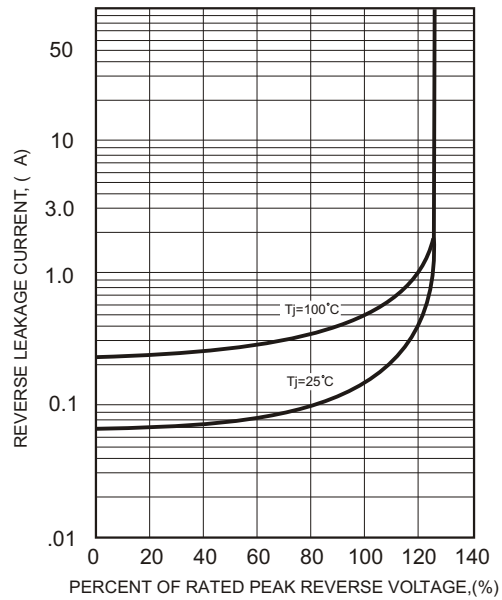


FIG.5-MAXIMUM NON-REPETITIVE FORWARD SURGE CURRENT

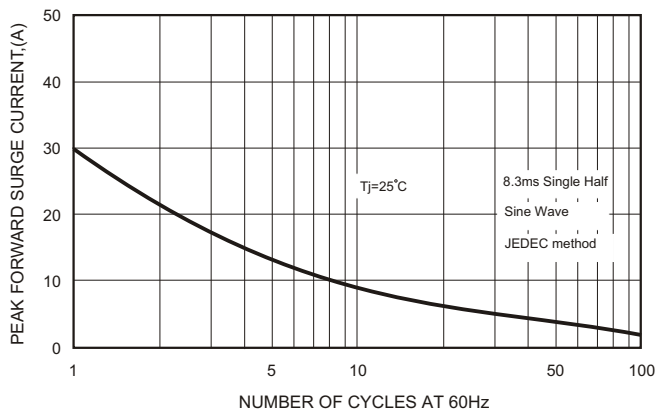


FIG.6-TYPICAL JUNCTION CAPACITANCE

