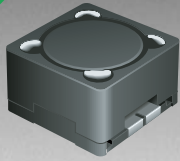


*RoHS COMPLIANT



BOURNS®

Features

- E6 series optional
- Unit height of 5.5 mm
- Current up to 5 A
- J-hook leads
- RoHS compliant*

Applications

- Input/output of DC/DC converters
- Power supplies for:
 - Portable communication equipment
 - Camcorders
 - LCD TVs
 - Car radios

SRR1205 Series - Shielded High Power Inductors

Electrical Specifications

| Bourns Part No. | Inductance 1kHz | | Q Ref. | Test Frequency (MHz) | SRF Min. (MHz) | RDC (mΩ) | I rms Max. (A) | I sat Typ. (A) |
|-----------------|-----------------|--------|--------|----------------------|----------------|----------|----------------|----------------|
| | (μH) | Tol. % | | | | | | |
| SRR1205-2R5ML | 2.5 | ± 20 | 18 | 7.96M | 27.0 | 24 | 5.00 | 10.00 |
| SRR1205-3R3ML | 3.3 | ± 20 | 20 | 7.96M | 25.0 | 30 | 4.50 | 9.20 |
| SRR1205-5R0ML | 5.0 | ± 20 | 20 | 7.96M | 21.0 | 35 | 4.00 | 8.20 |
| SRR1205-7R5ML | 7.5 | ± 20 | 20 | 7.96M | 17.0 | 40 | 3.50 | 7.80 |
| SRR1205-100ML | 10 | ± 20 | 21 | 2.52M | 15.0 | 54 | 3.00 | 6.00 |
| SRR1205-120ML | 12 | ± 20 | 20 | 2.52M | 13.0 | 65 | 2.80 | 5.60 |
| SRR1205-150ML | 15 | ± 20 | 20 | 2.52M | 11.0 | 70 | 2.70 | 5.30 |
| SRR1205-180ML | 18 | ± 20 | 20 | 2.52M | 10.0 | 82 | 2.60 | 4.80 |
| SRR1205-220ML | 22 | ± 20 | 19 | 2.52M | 9.0 | 95 | 2.40 | 4.60 |
| SRR1205-270ML | 27 | ± 20 | 18 | 2.52M | 8.0 | 120 | 2.00 | 4.00 |
| SRR1205-330ML | 33 | ± 20 | 18 | 2.52M | 8.0 | 145 | 1.80 | 3.50 |
| SRR1205-390ML | 39 | ± 20 | 18 | 2.52M | 7.5 | 160 | 1.65 | 3.20 |
| SRR1205-500YL | 50 | ± 15 | 18 | 2.52M | 7.0 | 200 | 1.50 | 2.80 |
| SRR1205-560YL | 56 | ± 15 | 18 | 2.52M | 7.0 | 240 | 1.40 | 2.50 |
| SRR1205-680YL | 68 | ± 15 | 17 | 2.52M | 6.5 | 280 | 1.30 | 2.40 |
| SRR1205-750YL | 75 | ± 15 | 17 | 2.52M | 6.0 | 330 | 1.20 | 2.20 |
| SRR1205-101KL | 100 | ± 10 | 12 | 0.796M | 5.0 | 400 | 1.00 | 2.00 |
| SRR1205-121KL | 120 | ± 10 | 10 | 0.796M | 4.5 | 500 | 0.90 | 1.60 |
| SRR1205-151KL | 150 | ± 10 | 10 | 0.796M | 4.0 | 580 | 0.80 | 1.50 |
| SRR1205-181KL | 180 | ± 10 | 9 | 0.796M | 3.5 | 750 | 0.70 | 1.40 |
| SRR1205-221KL | 220 | ± 10 | 9 | 0.796M | 3.0 | 840 | 0.65 | 1.30 |
| SRR1205-271KL | 270 | ± 10 | 9 | 0.796M | 2.5 | 1000 | 0.60 | 1.00 |
| SRR1205-331KL | 330 | ± 10 | 7 | 0.796M | 2.0 | 1340 | 0.54 | 0.88 |
| SRR1205-391KL | 390 | ± 10 | 7 | 0.796M | 2.0 | 1500 | 0.50 | 0.80 |
| SRR1205-471KL | 470 | ± 10 | 7 | 0.796M | 2.0 | 1980 | 0.45 | 0.72 |
| SRR1205-561KL | 560 | ± 10 | 6 | 0.796M | 1.5 | 2200 | 0.40 | 0.65 |
| SRR1205-681KL | 680 | ± 10 | 6 | 0.796M | 1.5 | 2400 | 0.35 | 0.60 |
| SRR1205-821KL | 820 | ± 10 | 5 | 0.796M | 1.0 | 3000 | 0.30 | 0.57 |

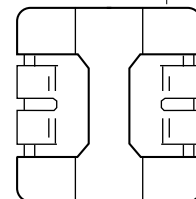
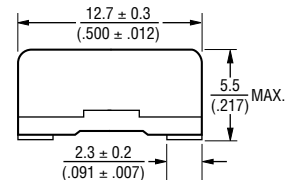
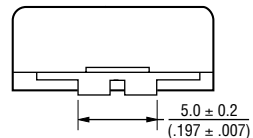
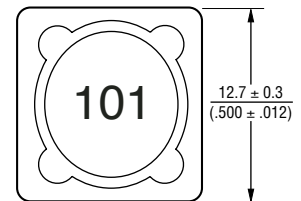
General Specifications

Test Voltage.....1 V
 Reflow Soldering ...230 °C, 50 sec. max.
 Operating Temperature ..-40 °C to +125 °C
 (Temperature rise included)
 Storage Temperature...-40 °C to +125 °C
 Resistance to Soldering Heat
260 °C for 5 sec.

Materials

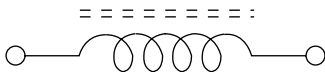
Core.....Ferrite DR and RI core
 Wire.....Enameled copper
 Base.....LCP E4008
 Terminal.....Cu/Ni/Sn
 Rated Current
Ind. drop 10 % typ. at Isat
 Temperature Rise
40 °C max. at rated I rms
 Packaging.....600 pcs. per reel

Product Dimensions

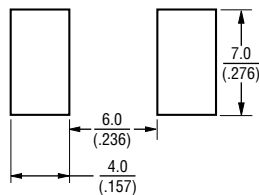


DIMENSIONS: $\frac{\text{MM}}{\text{(INCHES)}}$

Electrical Schematic



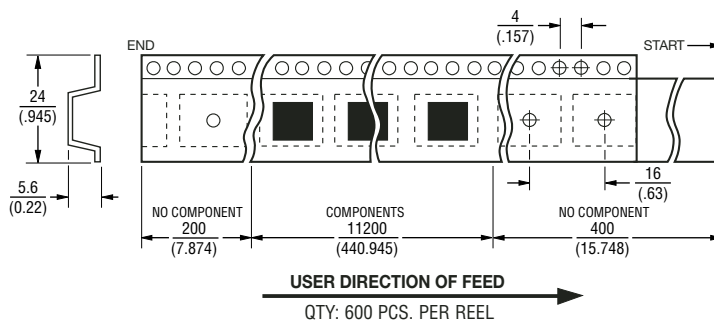
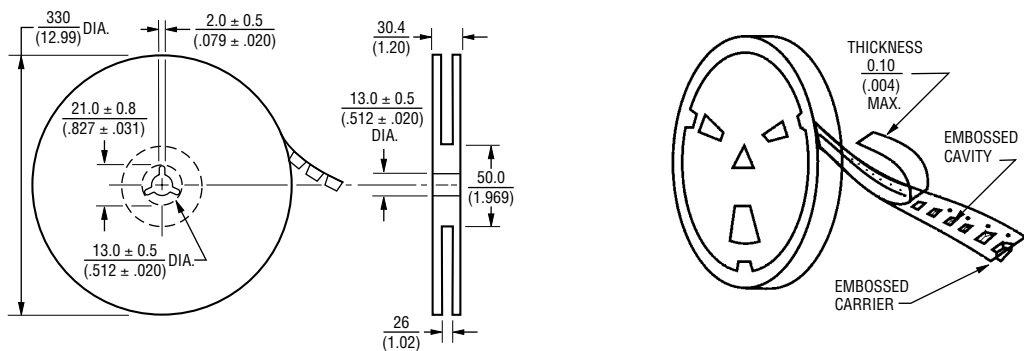
Recommended Layout



SRR1205 Series - Shielded High Power Inductors

BOURNS®

Packaging Specifications



DIMENSIONS: $\frac{\text{MM}}{\text{(INCHES)}}$

REV. 05/05

Specifications are subject to change without notice.
Customers should verify actual device performance in their specific applications.