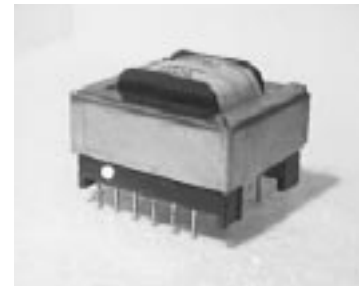


TLA 0839 is designed to be used in a "Single Coil" hybrid configuration with the following features.

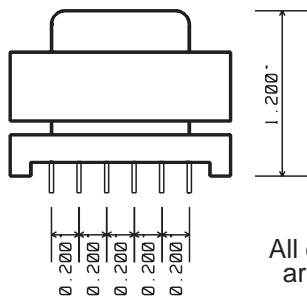
- Low loss.
- High Return loss.
- DC capability.

Applications:

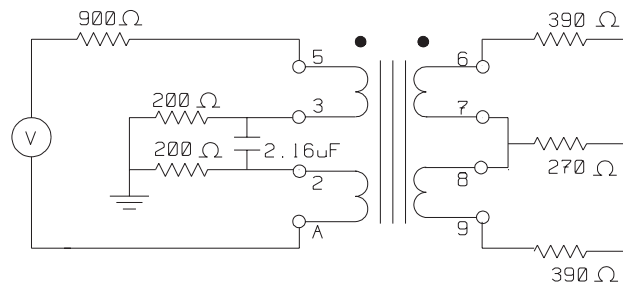
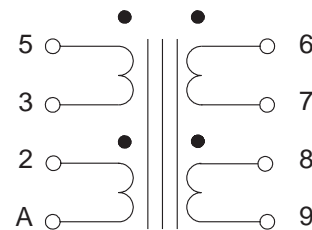
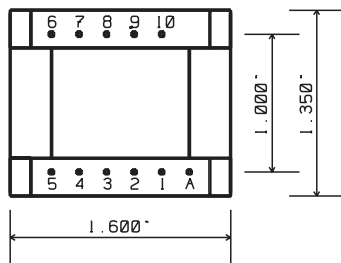
Interfacing the Central Office to 900Ω 2-wire subscriber loop in a CODEC system where DC loop feed is required.



MECHANICAL



All dimensions are in inches



ELECTRICAL

TLA 0839, in a 1-coil hybrid configuration, as per diagram, has the following electrical performance when terminated with specified impedances and up to 90 mA loop current.

Frequency Response	> 2.0 dB	60 Hz
	< 0.5 dB	300 - 500 Hz
	< 0.1 dB	500 - 4000 Hz
	< 0.4 dB	4 - 10 KHz
Return Loss, 2-wire port	> 20 dB	300 - 3500 Hz
	> 15 dB	200 Hz
Longitudinal Balance	≥ 40 dB	60 Hz
	≥ 51 dB	200 Hz
	≥ 59 dB	1000 Hz
	≥ 65 dB	3000 Hz
Transhybrid Loss	> 25 dB	300 - 4000 Hz
Dielectric Strength	700 V rms	winding to winding & Windings to core

ISSUE: B 95/04/11 TLA829