

RECTIFIERS

High Efficiency, 30A Center-Tap

UES2601
UES2602
UES2603
UES2601HR2
UES2602HR2
UES2603HR2

FEATURES

- Very Low Forward Voltage
- Very Fast Switching Speed
- Convenient Package
- High Surge
- Low Thermal Resistance
- Mechanically Rugged
- Both Polarities Available

DESCRIPTION

This series combines two high efficiency devices into one package, simplifying installation, reducing heat sink requirements and the need to purchase matched components.

ABSOLUTE MAXIMUM RATINGS

Peak Inverse Voltage, UES2601, UES2601HR2	50V
Peak Inverse Voltage, UES2602, UES2602HR2	100V
Peak Inverse Voltage, UES2603, UES2603HR2	150V
Maximum Average D.C. Output Current at $T_C = 100^\circ\text{C}$	30A
Non-Repetitive Sinusoidal Surge Current 8.3 ms	400A
Thermal Resistance, Junction to Case	1°C/W
Operating and Storage Temperature Range	-55°C to +175°C

POWER CYCLING

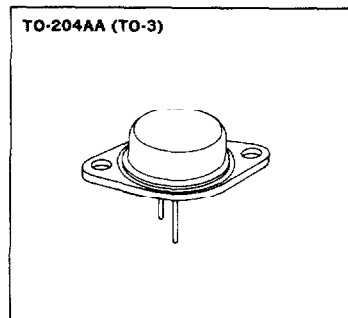
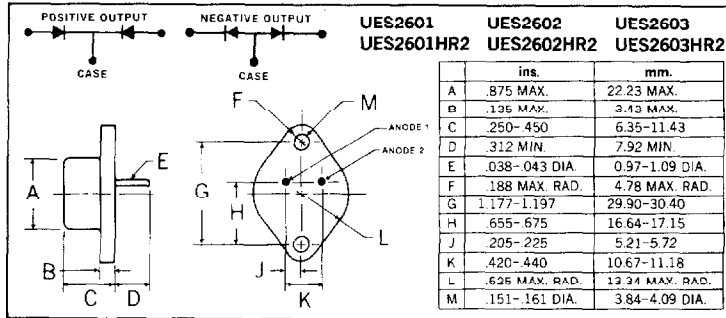
These devices possess the unique ability to pass many thousands of cycles of a stress test designed to evaluate the integrity of the bonding systems used in the construction of power rectifiers.

In this stress test, the case of the device is not heat sunk. Full rated forward current is supplied to force a case temperature increase at least 75°C, at which time, the current is removed and the case allowed to cool. The cycle is repeated a minimum of 5,000 times to simulate equipment being turned on and off. Extended power cycling tests demonstrate a product capability in excess of 25,000 cycles.

SWITCHING CHARACTERISTICS

The switching times of these ultra-fast rectifiers increase relatively little, with temperature or at different currents. Even in severe applications, such as catch diodes for switching regulators and output rectifiers for high frequency square wave inverters, these devices switch many times faster than the fastest associated transistors. Thus, the stresses on and powers dissipated in the switching transistors are substantially less than when using other rectifiers.

MECHANICAL SPECIFICATIONS



Note:

Standard polarity is positive output.
For reverse polarity (negative output) add suffix "R", ie. UES2601R.

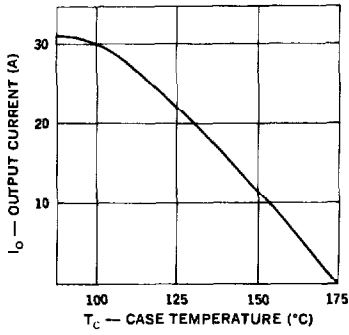
Microsemi Corp.
Watertown
The diode experts

ELECTRICAL SPECIFICATIONS

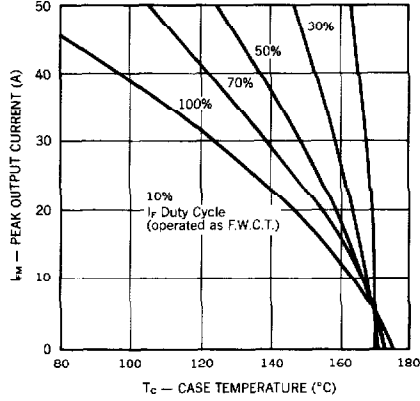
Type	PIV	Maximum Forward Voltage @		Maximum Reverse Current @		Maximum Reverse Recovery Time*
		T _C = 25°C	T _C = 125°C	T _C = 25°C	T _C = 125°C	
UES2601/2601HR2	50V	.930V	.825V	20μA	4mA	35nS
UES2602/2602HR2	100V	@ 15A	@ 15A			
UES2603/2603HR2	150V	t _p = 300μS	t _p = 300μS			

* Measured in circuit I_F = 0.5A, I_R = 1A, I_{REC} = 0.25A

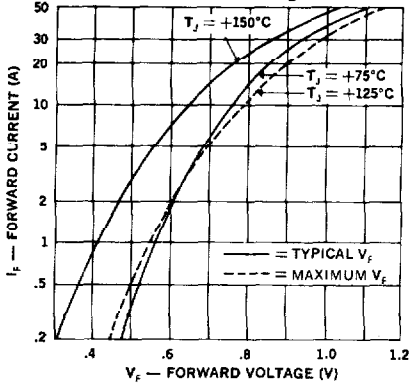
Output Current vs. Case Temperature



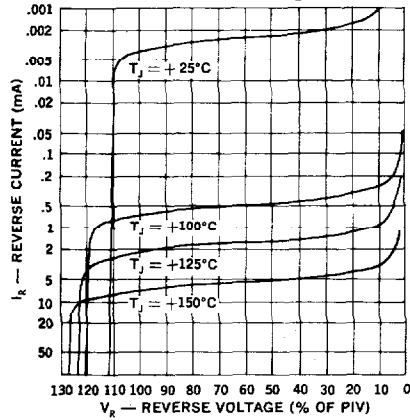
Peak Output Current vs. Case Temperature

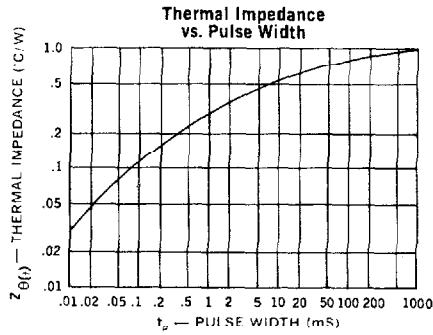
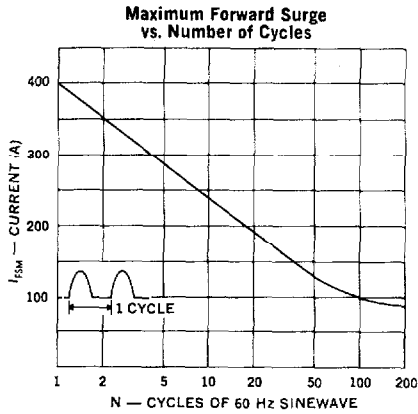


Forward Current vs. Forward Voltage

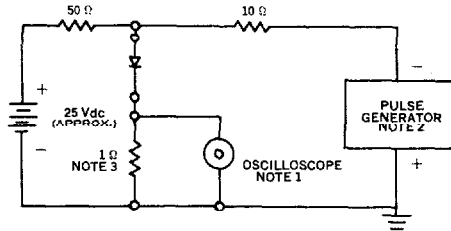


Typical Reverse Current vs. Reverse Voltage





Reverse-Recovery Circuit



- NOTES:**
- Oscilloscope: Rise time $\leq 3\text{ns}$; input impedance = 50 Ω .
 - Pulse Generator: Rise time $\leq 8\text{ns}$; source impedance 10 Ω .
 - Current viewing resistor, non-inductive, coaxial recommended.

OPTIONAL HIGH RELIABILITY (HR2) SCREENING

The following tests are performed on 100% of the devices specified UES2601HR2, 2HR2, 3HR2.

SCREEN	MIL-STD-750 METHOD	CONDITIONS
1. High Temperature	1032	24 Hours @ $T_A = 150^\circ\text{C}$
2. Thermal Shock (Temperature Cycling)	1051	F, 20 Cycles, -55 to $+150^\circ\text{C}$. No dwell required @ 25°C , $t \geq 10$ min. at extremes.
3. Hermetic Seal a. Fine b. Gross	1071	H, Helium C, Liquid
4. Thermal Impedance		Sage Test
5. Interim Electrical Parameters	GO/NO GO	V_F and I_R @ 25°C
6. High Temperature Reverse Bias (HTRB)	1038	A, 48 Hours, $T_C = 125^\circ\text{C}$, $V_R = 80\%$ of rating
7. Final Electrical Parameters	GO/NO GO	V_F and I_R @ 25°C