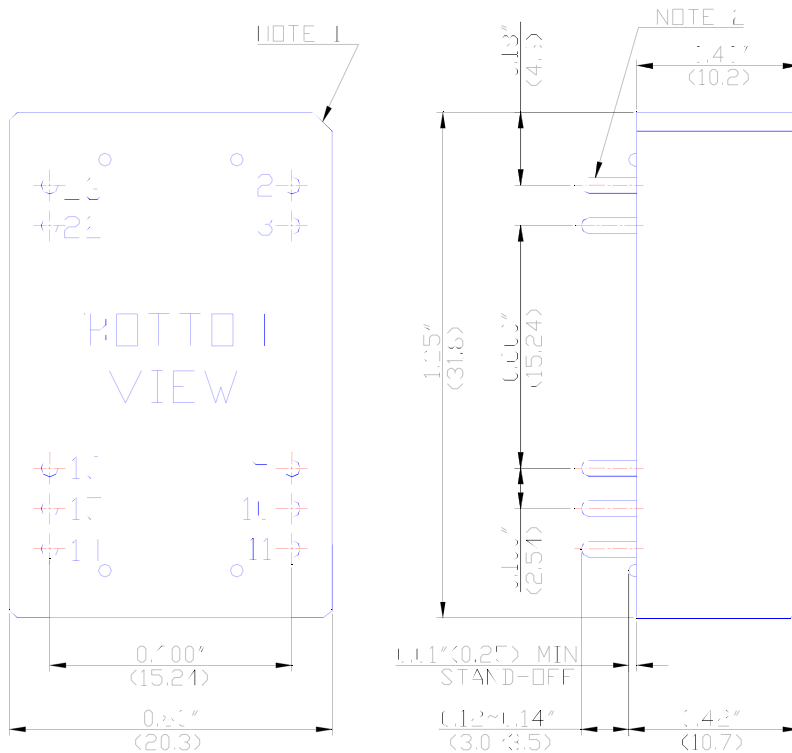


| MODEL NUMBER | INPUT VOLTAGE | OUTPUT VOLTAGE | OUTPUT CURRENT | INPUT CURRENT | | % EFF | CASE |
|--------------|---------------|----------------|----------------|---------------|-----------|-------|------|
| | | | | NO LOAD | FULL LOAD | | |
| UM3311 | 24 VDC | 5 VDC | 2000 mA | 10 mA | 520 mA | 80 | A |
| UM3321 | 48 VDC | 5 VDC | 2000 mA | 5 mA | 254 mA | 82 | A |

NOTES: 1. Maximum capacitive load across the each output ports should not be over following indicated values.
2. Other output voltage can be supported upon request.

| MODEL NUMBER | UM3311 | UM3321 |
|---|--------|--------|
| MAXIMUM ¹ CAPACITIVE LOAD (uF) | +200 | +200 |

CASE A



| Pin Connections | |
|-----------------|---------------|
| Pin | Single Output |
| 2 | -V Input |
| 3 | -V Input |
| 9 | NP* |
| 10 | NP* |
| 11 | NC* |
| 14 | +V Output |
| 15 | NP* |
| 16 | -V Output |
| 22 | +V Input |
| 23 | +V Input |

*NC (No Connection)

*NP (No Pin)

All dimensions in inches (mm)

Note 1: Pin size is 0.020±0.005 inches (0.5mm)dia.
or 0.020*0.012 inches

Note 2: Tolerance .xx =±0.04"
.xxx=±0.010"



**UNIVERSAL
MICROELECTRONICS**

3,27TH RD., TAICHUNG INDUSTRIAL PARK,
TAICHUNG, TAIWAN, R.O.C.
TEL: 886-4-23590096 FAX: 886-4-23590129